

701Z42=1-1, 701Z42=1-4

DE - Weitere Sprachversionen können Sie herunterladen unter: www.pe.ottobock.com/downloadcenter
EN - Additional language versions are available for download under: www.pe.ottobock.com/downloadcenter
FR - Vous pouvez télécharger d'autres versions linguistiques sur: www.pe.ottobock.com/downloadcenter
IT - Ulteriori lingue possono essere scaricate all'indirizzo: www.pe.ottobock.com/downloadcenter
ES - Puede descargar la versión en otros idiomas en: www.pe.ottobock.com/downloadcenter
NL - Overige taalversies kunt u downloaden via: www.pe.ottobock.com/downloadcenter
SV - Andra språkversioner går att ladda ner från: www.pe.ottobock.com/downloadcenter
RU - Версии на других языках можно скачать по ссылке: www.pe.ottobock.com/downloadcenter

Table of contents

EN

1	Important information on this document	5
1.1	Scope of this document	5
1.2	Document release date	5
1.3	Structure of this document	6
1.4	Meanings of safety instructions and pictograms	6
1.4.1	Meanings of signal words in safety instructions.....	6
1.4.1.1	Signal word DANGER	7
1.4.1.2	Signal word WARNING	7
1.4.1.3	Signal word CAUTION	7
1.4.1.4	Signal word NOTICE	7
1.4.1.5	Structure of the safety instructions	7
1.4.2	Meanings of pictograms	7
1.4.2.1	Meanings of pictograms in the illustration	7
2	Product Description.....	8
2.1	Intended Use	8
2.2	Improper use.....	8
2.3	Product overview	9
2.3.1	Control elements and indicator elements	9
2.3.1.1	Main switch.....	9
2.3.1.2	Touchscreen	9
2.3.1.3	Signal lamp	10
2.3.2	Special product components	10
2.3.2.1	Storage pocket for operating instructions.....	10
2.3.2.2	Holding devices for consumables.....	11
2.3.2.3	PLC connections	11
3	Safety.....	12
3.1	Hazardous areas and precautions	13
3.1.1	Hazardous area 1.....	13
3.1.2	Hazardous area 2.....	13
4	Technical data	14
4.1	Dimensions and weight.....	14
4.2	Electrical data.....	14
4.3	Pneumatic data.....	14
4.4	Noise emissions.....	14
4.5	Environmental conditions	15
5	Transport.....	15
6	Storage.....	15
7	Unpacking.....	16
7.1	Checking the delivered items.....	18
8	Positioning.....	19
9	Installation	20
9.1	Optional (701Z42=1-1): Installation of the socket	20
9.2	Mounting the exhaust filter.....	21
10	Initial operation	21
11	Operation	22
11.1	Switching on the product	22
11.2	Refilling consumables.....	22
11.3	Using the shelves	24
11.4	Using the touchscreen	26
11.4.1	Changing the user interface language	26
11.4.2	Switching the light on/off	26
11.4.3	Displaying system information.....	26
11.4.3.1	Setting the time.....	26

11.4.3.2	Setting the date	27
11.4.4	Unlocking the doors	27
11.4.5	Optional: Connecting the machine to the cloud.....	28
11.4.6	Starting the disinfection	29
11.5	Switching off the product	29
11.6	Cleaning	30
12	Troubleshooting	31
12.1	Error messages	31
12.1.1	Error message "Replace pre-filter"	31
12.1.2	Error message "Replace carbon-filter"	31
12.1.3	Error message "Replace nozzle"	31
12.1.4	Error message "Validation rejected!"	31
12.1.5	Error message "Product not disinfected!"	32
12.2	System messages	32
12.2.1	"Checking the disinfectant effect" system message	32
12.2.2	"The doors are not closed properly!" system message	32
12.2.3	"Product not disinfected!" system message	32
12.2.4	"Nozzle clogged!" system message	33
12.2.5	"Jerrycan is empty!" system message	33
12.2.6	"Validation rejected!" system message.....	33
13	Maintenance	34
13.1	Inspection	35
13.1.1	Checking the nameplate and the labels.....	35
13.1.2	Checking the cables.....	36
13.1.3	Checking the disinfectant effect	37
13.2	Maintenance.....	39
13.2.1	Changing the pre-filter	39
13.2.2	Changing the exhaust filter	41
13.2.3	Changing the spray nozzle	43
13.3	Repair	45
13.4	Electrical diagram	45
14	Putting out of operation	46
15	Disassembly	46
16	Packaging	46
17	Disposal	46
18	Legal Information.....	47
18.1	Liability	47
18.2	Declaration of Conformity.....	47
19	Appendices	48
19.1	List of pictograms used.....	48
19.1.1	Warning symbols	48
19.1.2	Mandatory symbols	48
19.1.3	Prohibition symbols	49
19.1.4	Transport and storage pictograms.....	49

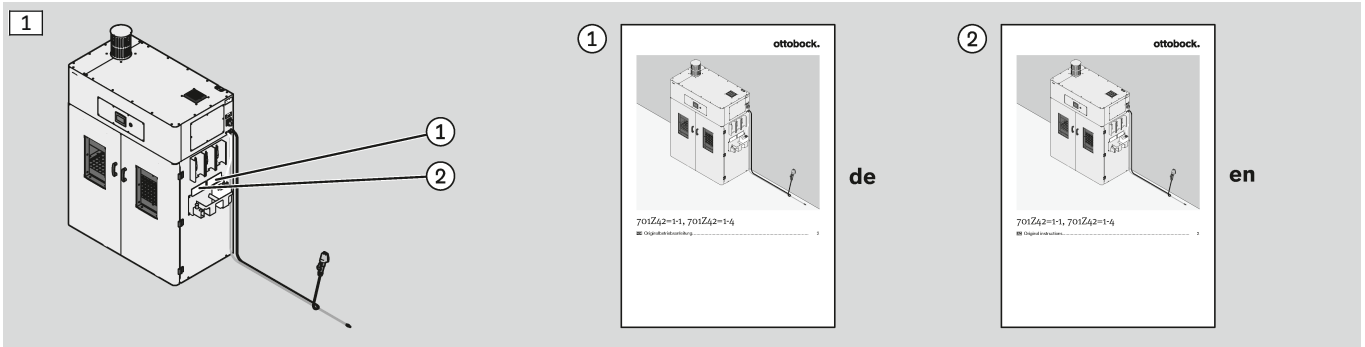
1 Important information on this document

⚠ WARNING

Working with the product without observing the operating instructions

Death or serious injury due to reckless work

- ▶ Observe the operating instructions when working with the product.
- ▶ Familiarise yourself with the structure and contents of the operating instructions by reading the chapter "Structure of this document" (see page 6).
- ▶ Please especially observe the chapter "Safety" (see page 12) and the safety instructions in the chapters in connection with the work to be carried out.
- ▶ Please always keep these operating instructions by the product.



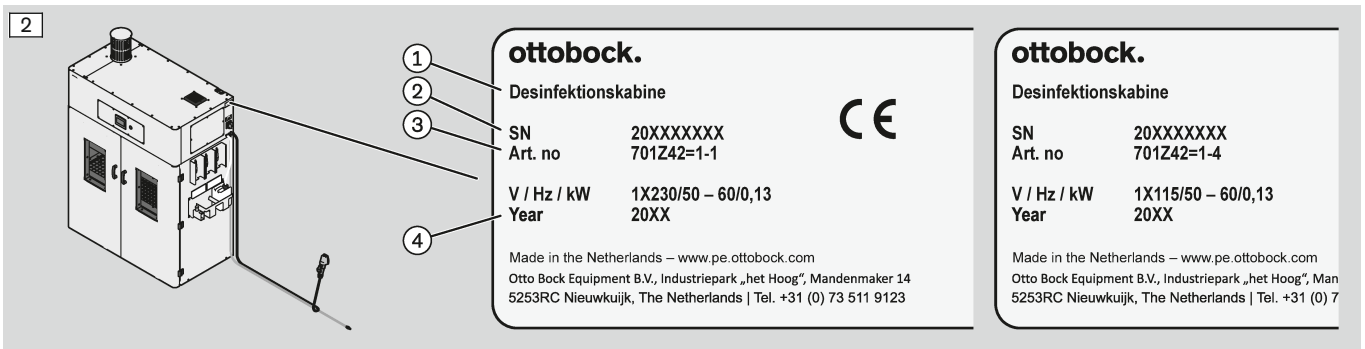
1.1 Scope of this document

This document is valid for the following products:

Reference number	Designation	From year of manufacture
701Z42=1-1, 701Z42=1-4	Desinfection cabinet	2020

Nameplate legend

①	Desinfection cabinet	③	Art no. (reference number)
②	SN (Serial number)	④	Year (Year of manufacture)



1.2 Document release date

This document is valid as of the following release date:

Printing reference number	Version	Release date [year-month-day]
647M8=en_INT	02	2021-07-20

1.3 Structure of this document

The chapters of this document contain all important product information.

The document structure is essentially oriented towards the various phases in the product life cycle and the associated tasks.

The product can only be used safely if all chapters relevant to the given work have been read.

The following list shows the chapters important for all work, those important for specific tasks and those containing general information:

Chapters important for all work

- **Important information on this document** (see page 5)
- **Product description** (see page 8)
- **Safety** (see page 12)
- **Legal information** (see page 47)

Chapters important for specific tasks

- **Technical data** (see page 14)
- **Transport** (see page 15)
- **Storage** (see page 15)
- **Unpacking** (see page 16)
- **Positioning** (see page 19)
- **Installation** (see page 20)
- **Initial Operation** (see page 21)
- **Operation** (see page 22)
- **Troubleshooting** (see page 31)
- **Servicing** (see page 34)
- **Putting out of operation** (see page 46)
- **Disassembly** (see page 46)
- **Packaging** (see page 46)
- **Disposal** (see page 46)

Chapter containing general information

- **Appendices** (see page 48)

1.4 Meanings of safety instructions and pictograms

1.4.1 Meanings of signal words in safety instructions

This document contains safety instructions that provide information about hazards connected to the product.

The hazard severity level and consequences are highlighted and classified in the safety instructions by means of signal words.

In the following subchapters the signal words and the structure of the safety instructions are explained.

1.4.1.1 Signal word DANGER



The signal word "DANGER" draws attention to dangerous actions or situations which will inevitably have the severe consequences specified in the safety instruction (e.g. death or serious injury) in case of noncompliance.

1.4.1.2 Signal word WARNING



The signal word "WARNING" draws attention to dangerous actions or situations which could possibly have the severe consequences specified in the safety instruction (e.g. death or serious injury) in case of noncompliance.

1.4.1.3 Signal word CAUTION



The signal word "CAUTION" draws attention to dangerous actions or situations which will have the minor consequences specified in the safety instruction (minor injury) in case of noncompliance.

1.4.1.4 Signal word NOTICE



The signal word "NOTICE" draws attention to dangerous actions or situations which could possibly lead to the material damage specified in the safety instruction (e.g. damage to the product) in case of noncompliance.

1.4.1.5 Structure of the safety instructions

In this document the following types of safety instructions are used:

- Safety instructions
- Embedded safety instructions

The following examples illustrate the manner in which these types of safety instructions are structured. The signal word "CAUTION" is used as an example.

Structure of a safety instruction



In the first paragraph under the signal word the type and source of the hazard are indicated. These are dangerous activities or situations connected with the product.

The optional pictogram represents either the hazard type and source or the precautionary measure to be taken.

In the second paragraph the consequences of disregarding the hazard are described.

► From the third paragraph on handling instructions for avoiding the hazard are given.

Structure of an embedded safety instruction

The embedded safety instruction is only used in handling instructions.

► **CAUTION! The first part of the handling instruction is the embedded safety instruction. After the signal word a handling instruction is given as a measure for avoiding the hazard.**

The second part contains the handling instruction which is directly connected with the embedded safety instruction.

1.4.2 Meanings of pictograms

In this document symbols and pictograms which are either self-explanatory or whose meaning can be deduced from the context are used.

The chapter "Appendix" contains an explanation of the symbols and pictograms in the section "List of pictograms used" (see page 48).

1.4.2.1 Meanings of pictograms in the illustration

	Numbering for the illustrations		The instructions accompanying the illustrations are relevant to safety
	Numbering for a defined sequence		Numbering for the parts of an illustration
	Acceptable		Unacceptable
	Locked		Unlocked
	Replace		

2 Product Description

2.1 Intended Use

⚠ WARNING

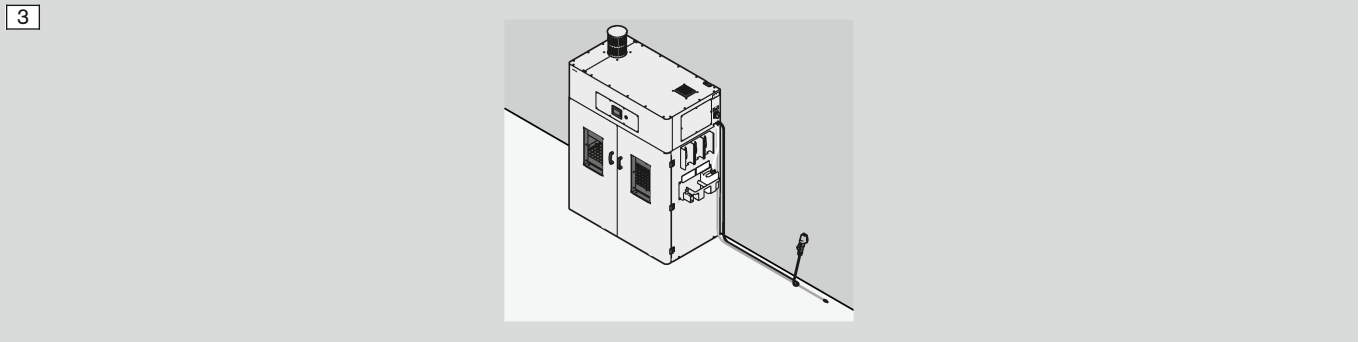
Improper use of the product

Death, serious injury or damage to health and to the product through improper use

- ▶ Only use the product for its intended purpose.

The product has been designed for the following application area only:

- Disinfection booth for disinfecting medical products (e.g. prostheses and orthoses) that may be treated with the machine's disinfectant (Hydrogen peroxide)



Intended additionally required products

- Personal protective equipment (protective goggles, protective gloves, respirator, protective clothing)



Intended installation location

- Orthopaedic workshop

Correct staff selection

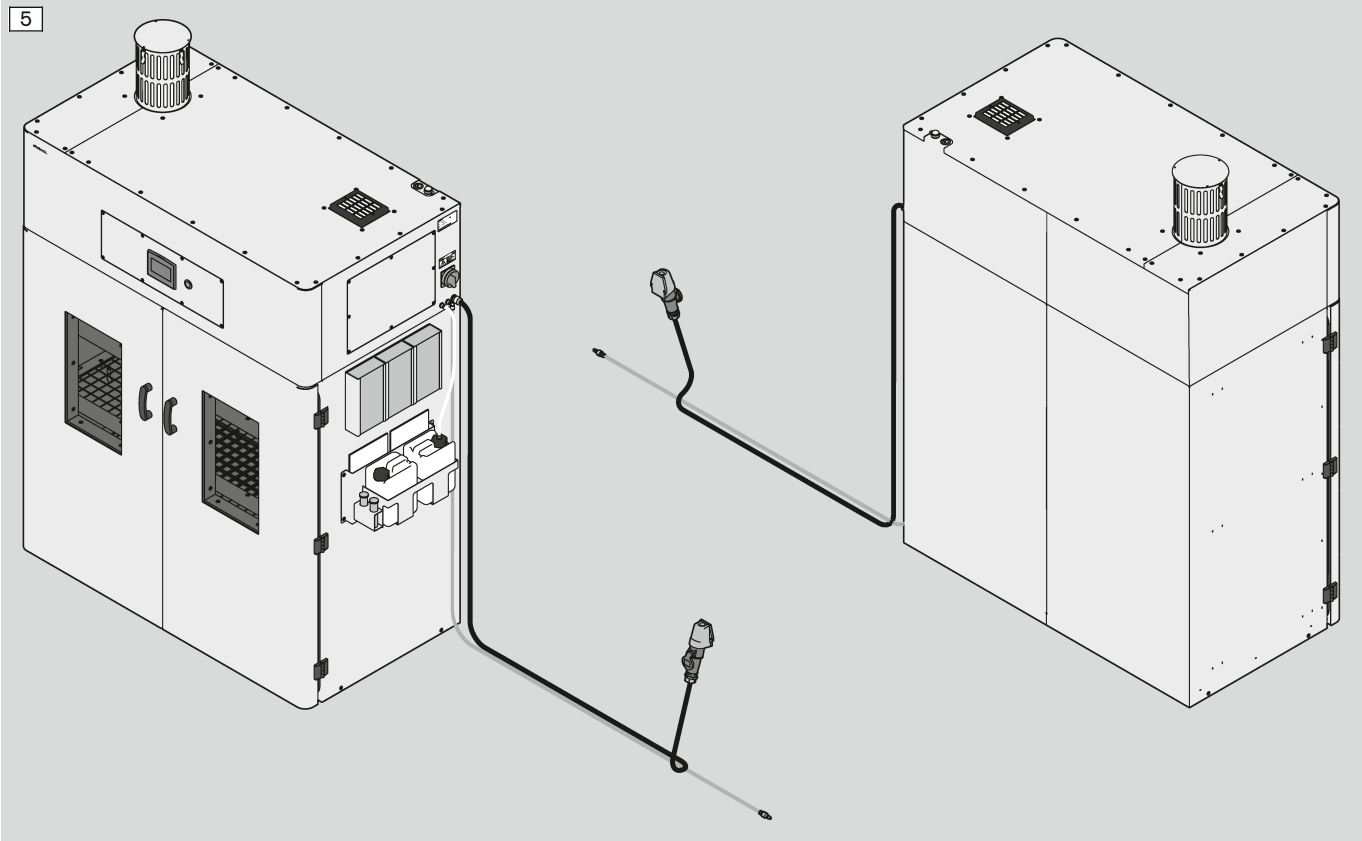
- Use only by properly trained employees authorised by operator
- Use only following product training by operator
- Repair and maintenance work only by service technicians or specialists authorised by Ottobock in accordance with the requirements given in the respective chapters
- Special work (e.g. transport) only by staff in accordance with the requirements given in the respective chapter

2.2 Improper use

The product is not intended for the following prohibited uses:

- Improper use is any use not listed in the chapter "Intended use"

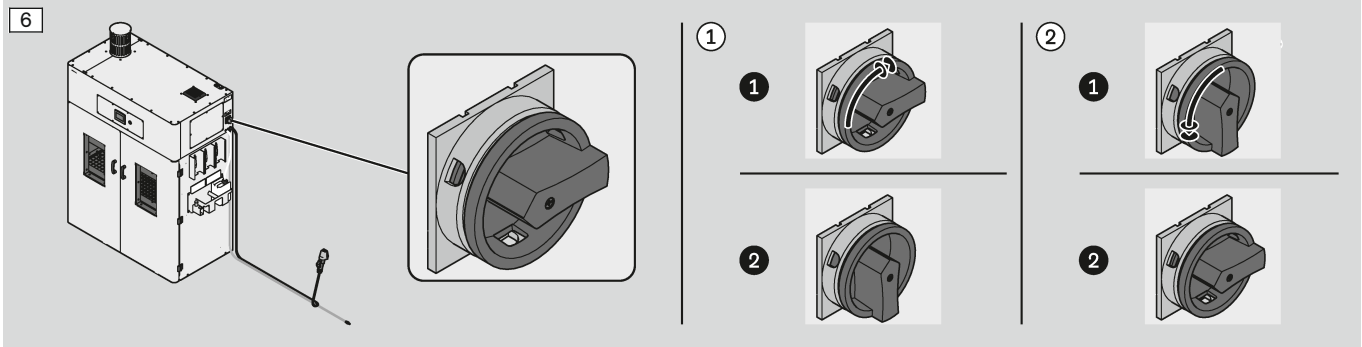
2.3 Product overview



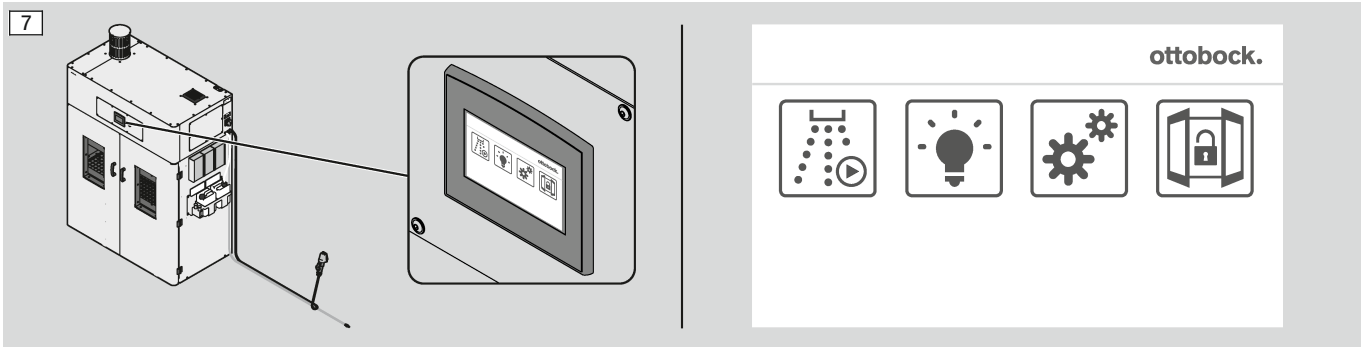
2.3.1 Control elements and indicator elements

2.3.1.1 Main switch

①: Switching on; ②: Switching off

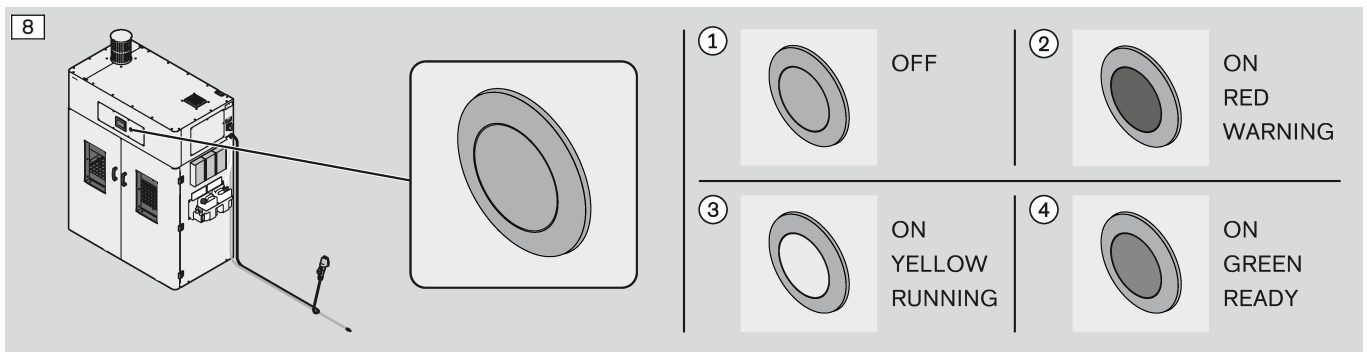


2.3.1.2 Touchscreen



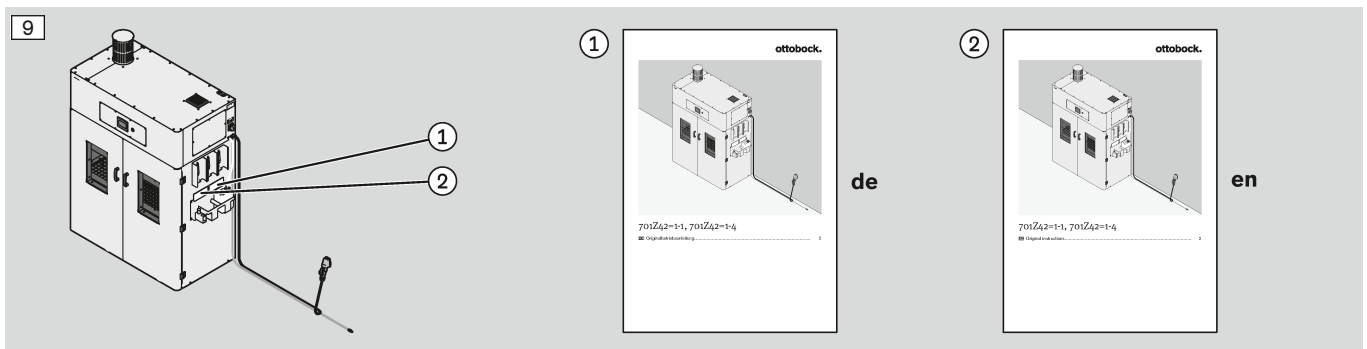
2.3.1.3 Signal lamp

①: OFF; ②: ON - RED - WARNING; ③: ON - YELLOW - RUNNING (Program); ④: ON - GREEN - READY



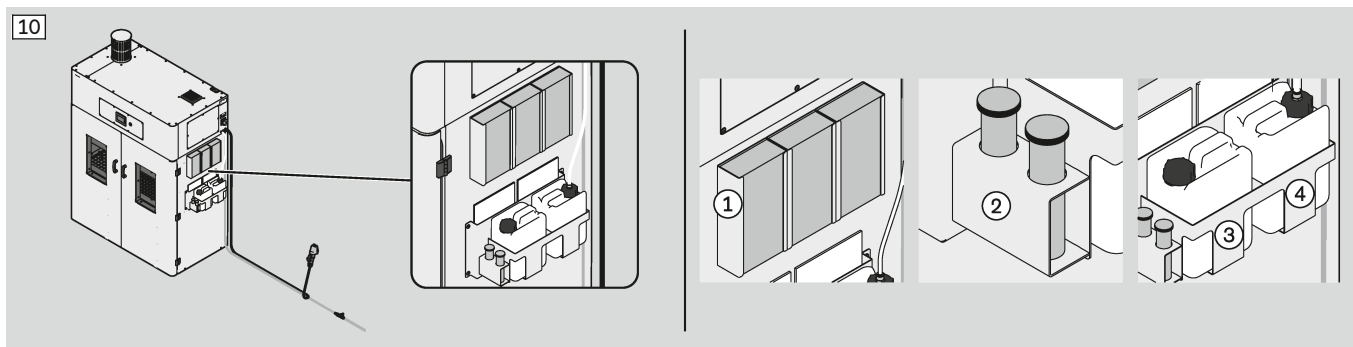
2.3.2 Special product components

2.3.2.1 Storage pocket for operating instructions



2.3.2.2 Holding devices for consumables

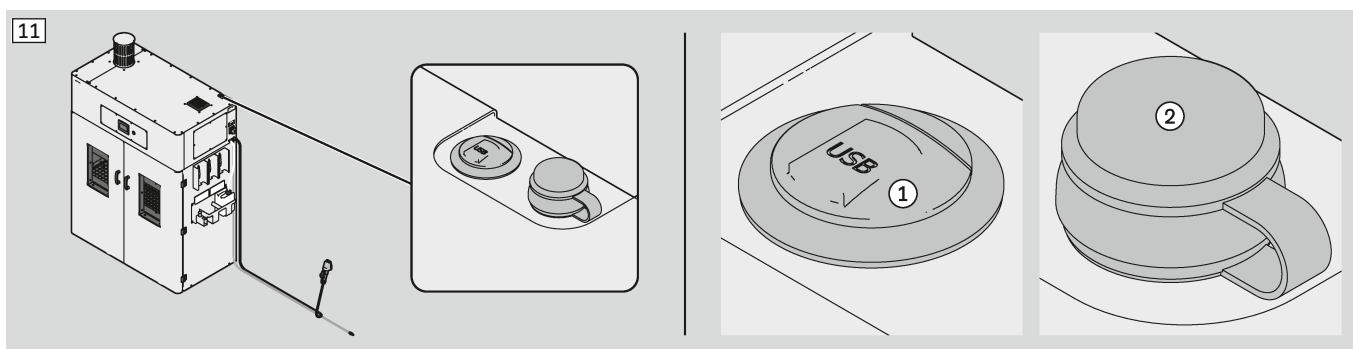
①: Protective gloves; ②: Testing sticks; ③: Disinfectant (Spare can); ④: Disinfectant (Can)



2.3.2.3 PLC connections

NOTICE! The following PLC connections may only be used for cloud connectivity (section "Optional: Connecting the machine to the cloud" – see page 28):

①: USB port; ②: RJ45 port



3 Safety

Staff selection

It is critical to safety that the respective product-related tasks be carried out by the intended staff specified in this document.

Staff is divided into the following groups in this document:

- **Operating staff**
This term refers to staff operating the product.
- **Qualified personnel**
This term refers to staff requiring special technical knowledge for certain tasks related to the product.
- **Service technicians**
This term refers to staff foreseen for maintenance and repair tasks (chapter "Repair" - see page 45).

⚠ WARNING

Incorrect staff selection

Personal injury and material damage through deployment of inappropriate staff

- ▶ Deploy only staff specified in this document for the respective tasks.

Product safety concept

In order to be able to work safely with the product the user must be aware of the hazardous areas and must observe the precautions.

The hazardous areas of the product are described in the following chapter. For each hazardous area precautionary measures are specified.

The precautionary measures encompass the following points:

- product's safety devices
- personal protective equipment

⚠ WARNING

Disregard of hazardous areas and precautions

Personal injury and material damage due to unsafe work practices

- ▶ Familiarise yourself with the product's hazardous areas.
- ▶ Do not operate the product without the foreseen safety devices.
- ▶ Use the appropriate personal protective equipment for the given task.

3.1 Hazardous areas and precautions

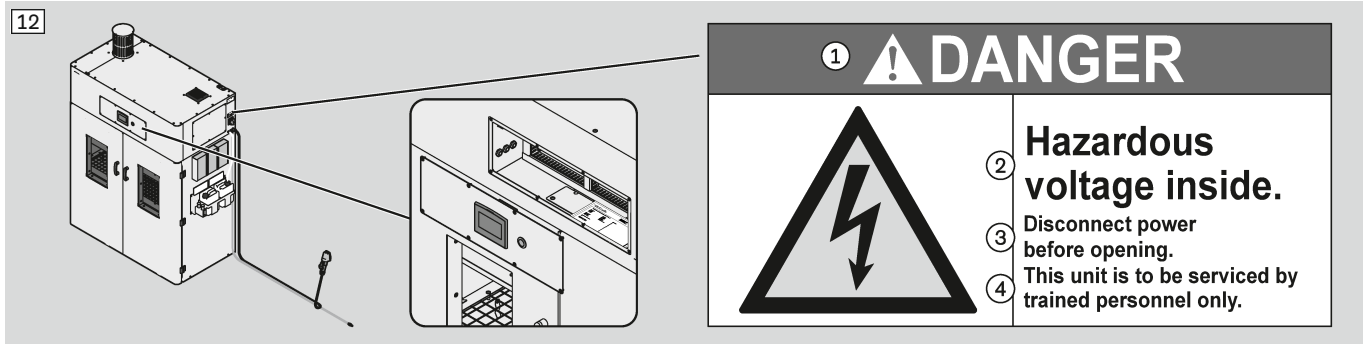
3.1.1 Hazardous area 1

High voltage

DANGER! ①; Hazardous voltage inside ②; Disconnect power before opening. ③; This unit is to be serviced by trained personnel only. ④

Product safety devices: Cover plate

- Observe the safety notice on the machine.

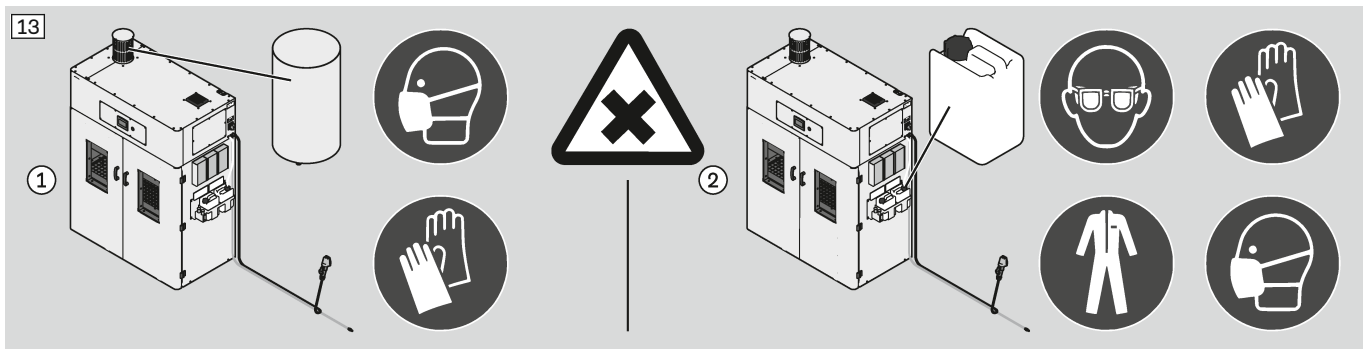


3.1.2 Hazardous area 2

Harmful or irritating substances

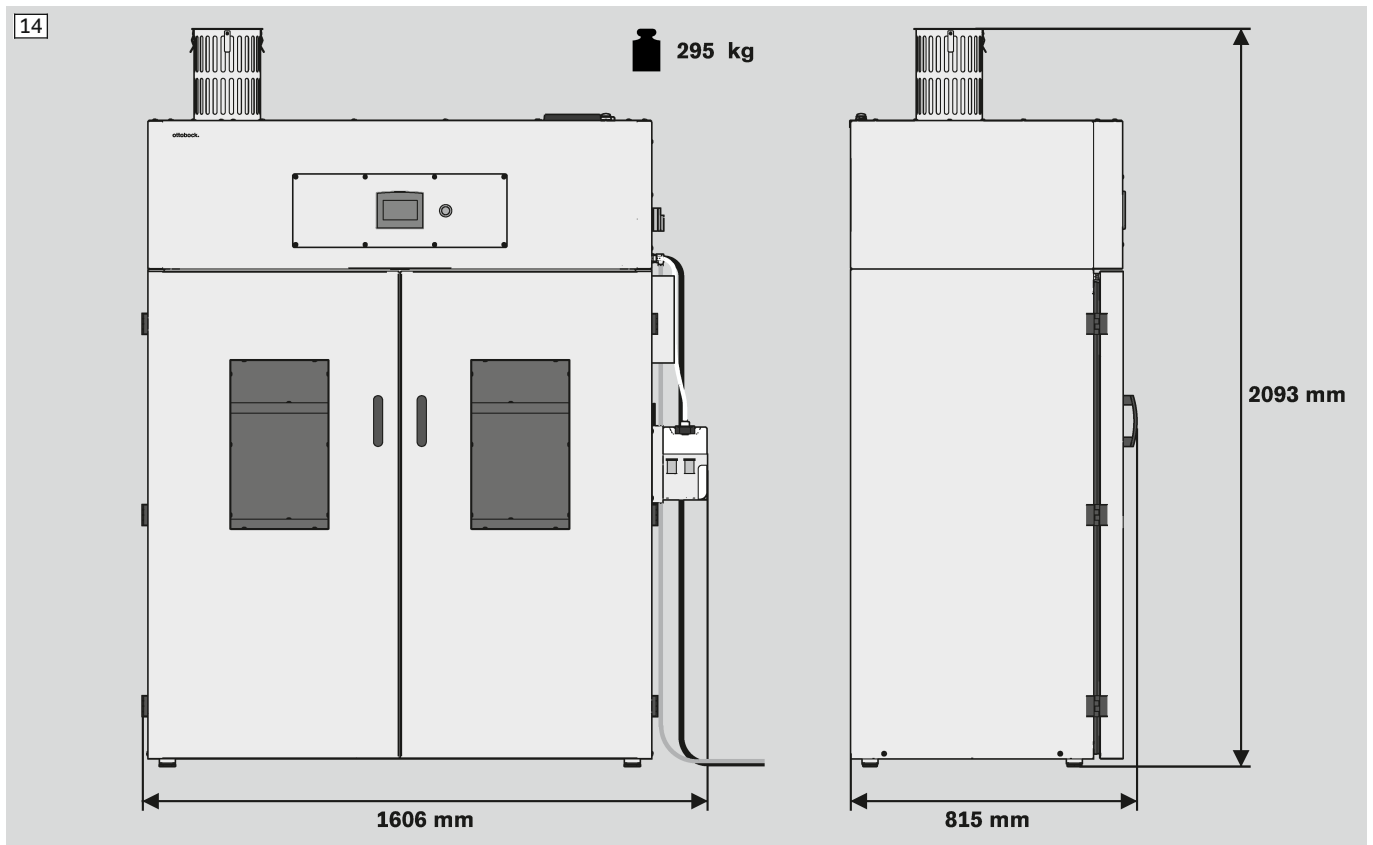
Warning symbol: Warning of harmful or irritating substances

- ①: Carbon fibers
Use respiratory protection and gloves when changing the exhaust filters.
Dispose the filters as chemical waste.
- ②: Hydrogen peroxide
Avoid inhalation of hydrogen peroxide, contact with skin and swallowing.
Wear personal protective equipment (protective goggles, protective gloves, respirator, protective clothing).
Pay attention to the safety data sheet supplied with the hydrogen peroxide.
Use hydrogen peroxide only to disinfect the approved products.

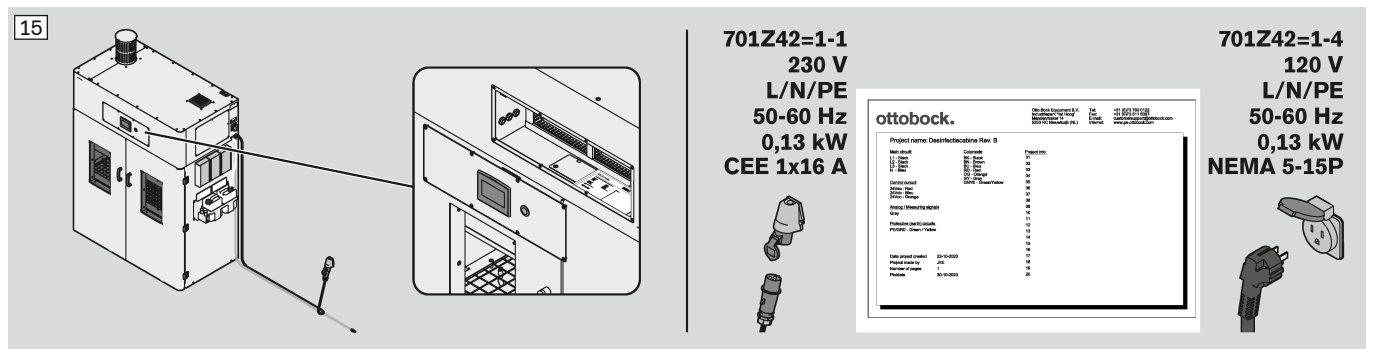


4 Technical data

4.1 Dimensions and weight



4.2 Electrical data



4.3 Pneumatic data

Compressed air supply from customer	Dust-free, dry and oil-free compressed air 6 – 10 bar
Working pressure of the machine	3 bar

4.4 Noise emissions

Noise measurement in idle condition	
Sound pressure level	65,9 dBA
Measurement method	free field at a distance of 1 m to machine at a height of 1.6 m
Hearing protection	not required

4.5 Environmental conditions

Admissible temperature range (storage)	-10°C – +50°C
Admissible temperature range (operation)	+12°C – +30°C
Allowable relative humidity (storage and operation)	70%, non-condensing

5 Transport

⚠ WARNING

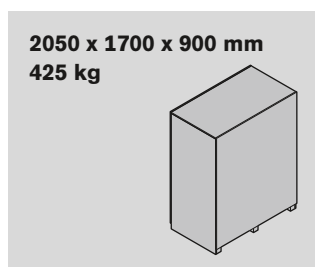
Standing under suspended loads

Death or severe injury due to falling or tipping product

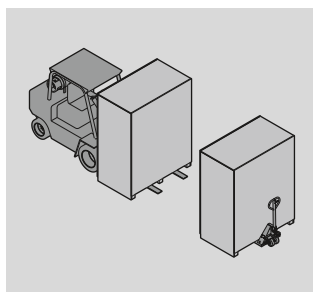
- ▶ Make sure there is no one in the region of suspended loads during transport.



- > **Required staff:**
specialist staff for transport
- Required personal protective equipment:**
safety boots
- ▶ **WARNING! Carry out transport with the required staff and required personal protective equipment only.**



- ▶ **WARNING! Be aware of that the product is top-heavy during transport (centre of gravity).**
Observe the transport symbols on the transport crate (explanation in chapter "Transport and storage pictograms" - see page 49).



- ▶ For transport and lifting use means of transport (e.g. crane with hoist, forklift truck and pallet jack) of sufficient lift capacity (chapter "Dimensions and weight" - see page 14).

6 Storage



- ▶ For storage observe the technical data in the chapter "Environmental conditions" (see page 15).
- ▶ Protect the product from moisture and extreme temperature fluctuations.
- ▶ To prevent the product being contaminated during storage leave it in the transport crate or cover it with a protective film.

7 Unpacking



- > **Required staff:**
specialist staff for transport
- Required personal protective equipment:**
safety boots
- ▶ **WARNING! Carry out transport with the required staff and required personal protective equipment only.**

NOTICE

Lifting the product at unsuitable points

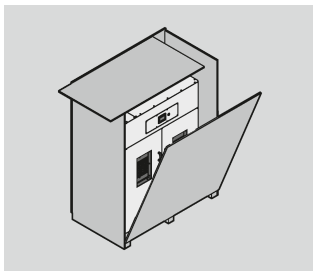
Damage to the product due to deformation and tipping

- ▶ Lift the product at the housing base between the legs only (e.g. using a forklift truck).
- ▶ When lifting ensure that the product cannot tip over.

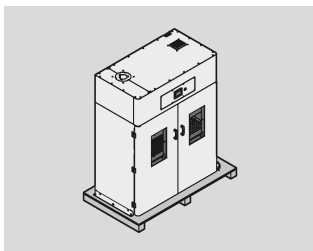
- ▶ Keep the packaging material for reuse or dispose of in an environmentally friendly manner according to the regulations of the user country.



- > **Required staff:**
several people
- ▶ **WARNING! When transporting the product ensure that it does not tip over.**
Transport the product to the location of installation.

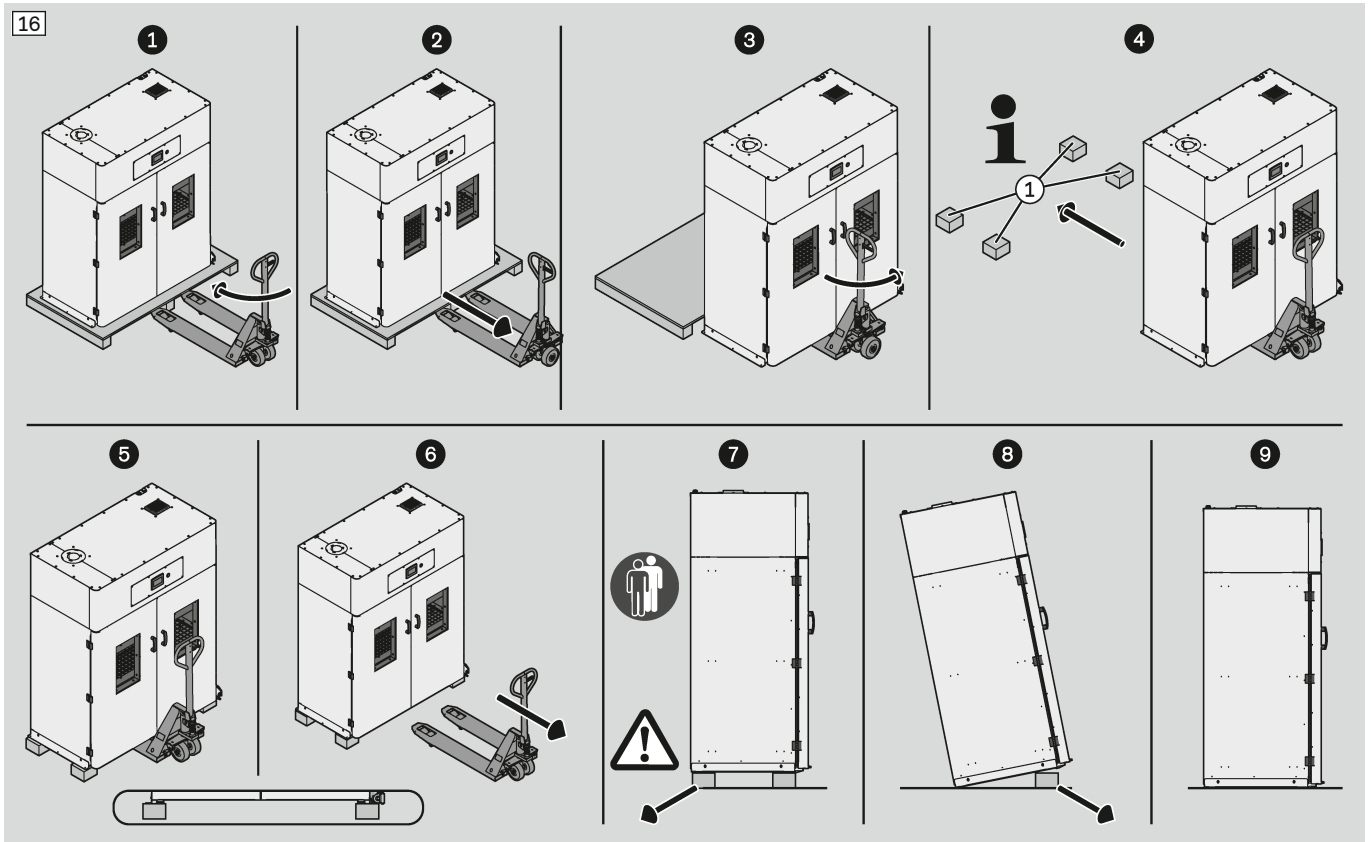


- ▶ Remove the top and side panels of the transport crate.



- ▶ Unscrew the screws fastening the product to the pallet.

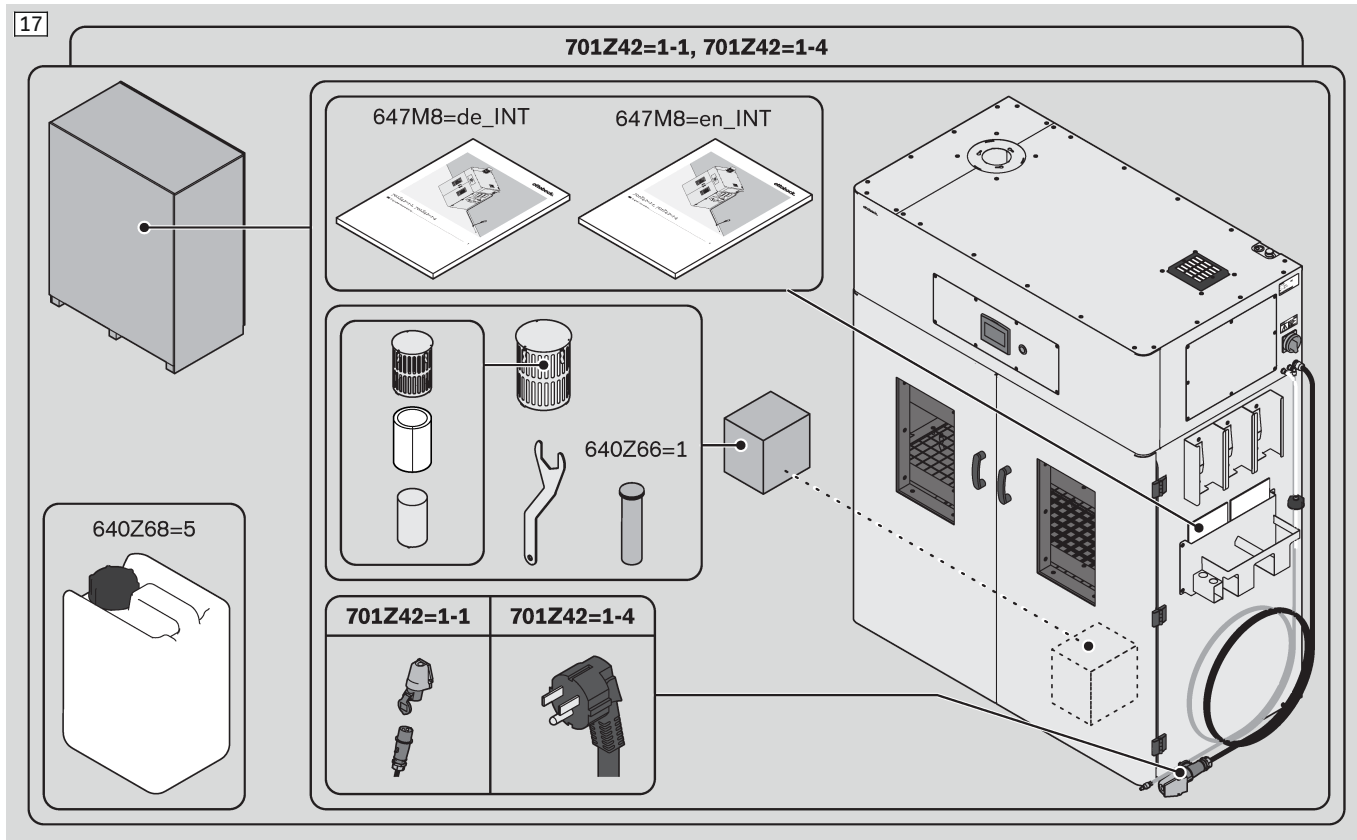
- ▶ Transport the product to the location of installation using a lifting means such as a lift truck of sufficient lift capacity.
- ▶ **INFORMATION:** The wooden blocks ① are not included in scope of delivery.
At the location of installation first set down the product with the transport fasteners on the wooden blocks.



7.1 Checking the delivered items

- ▶ To open the doors observe the section "Unlocking the doors" (see page 27).
- ▶ Check the delivery for completeness.

The following products are included in the delivery:



8 Positioning



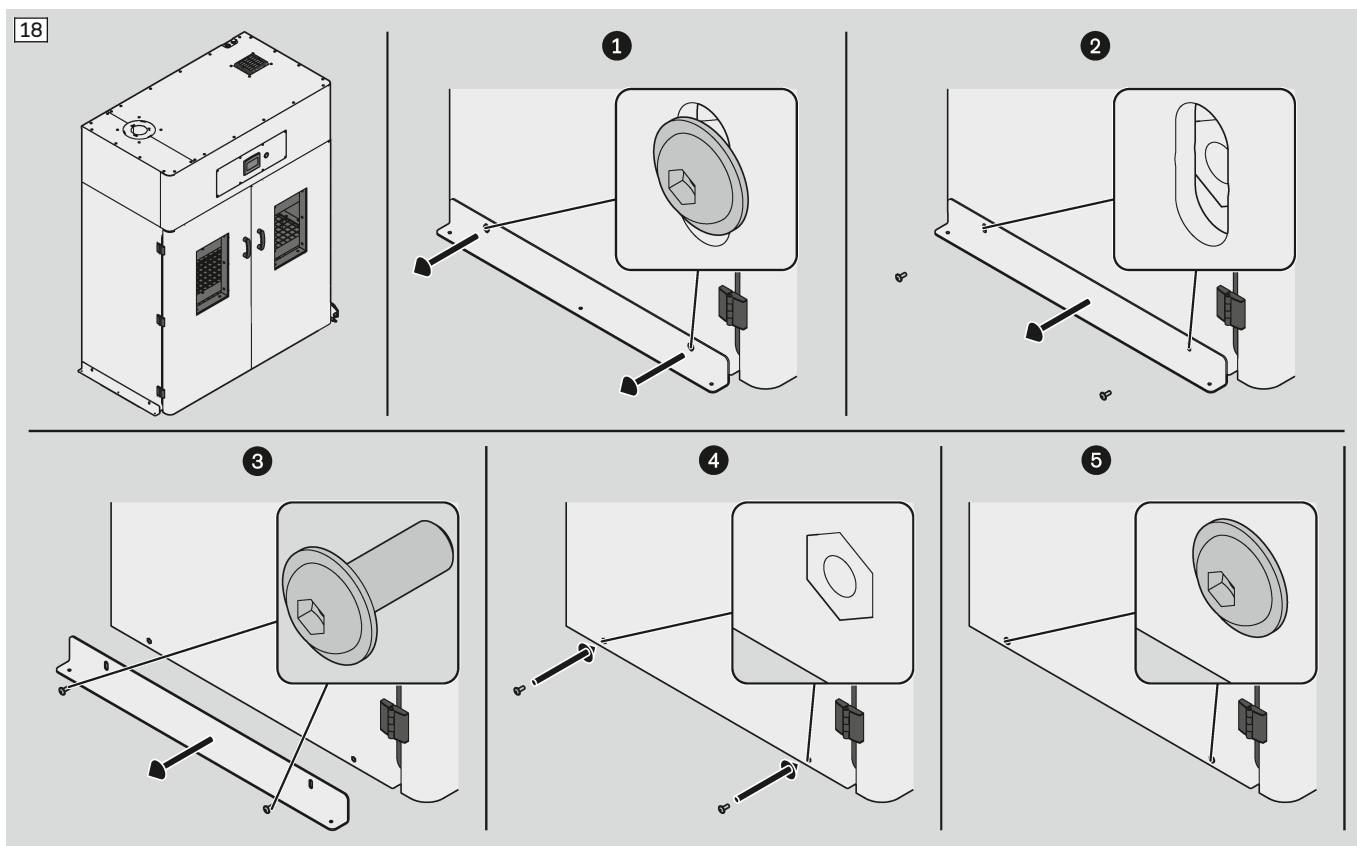
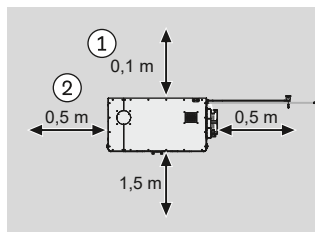
> **Required staff:**
specialist staff for transport

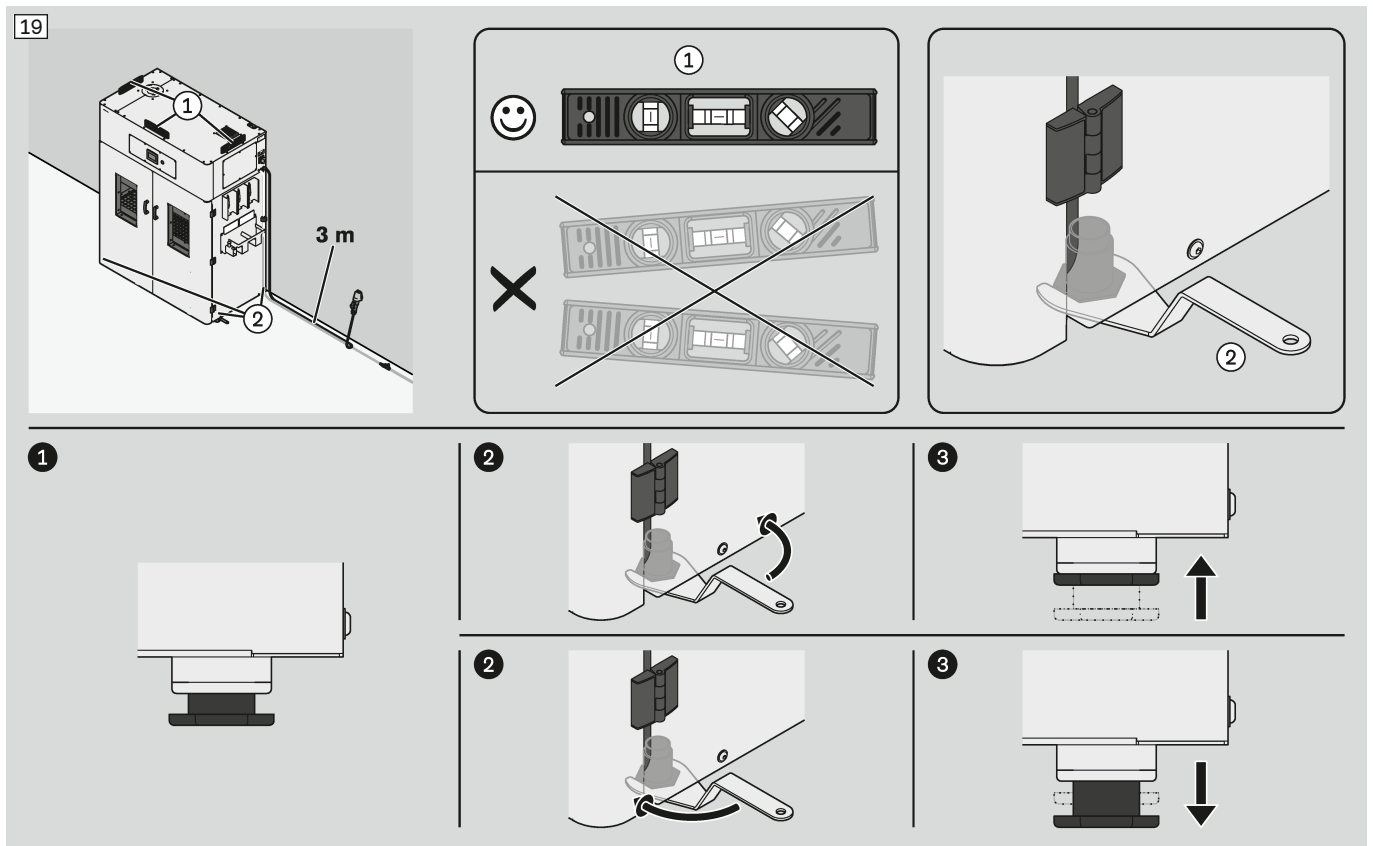
Required personal protective equipment:
safety boots

▶ **WARNING! Carry out transport with the required staff and required personal protective equipment only.**

▶ When selecting the installation location maintain the recommended minimum distances to the walls - the dimensions ① and ② may be smaller than specified if space is insufficient.

INFORMATION: This facilitates work in connection with use, cleaning and maintenance.



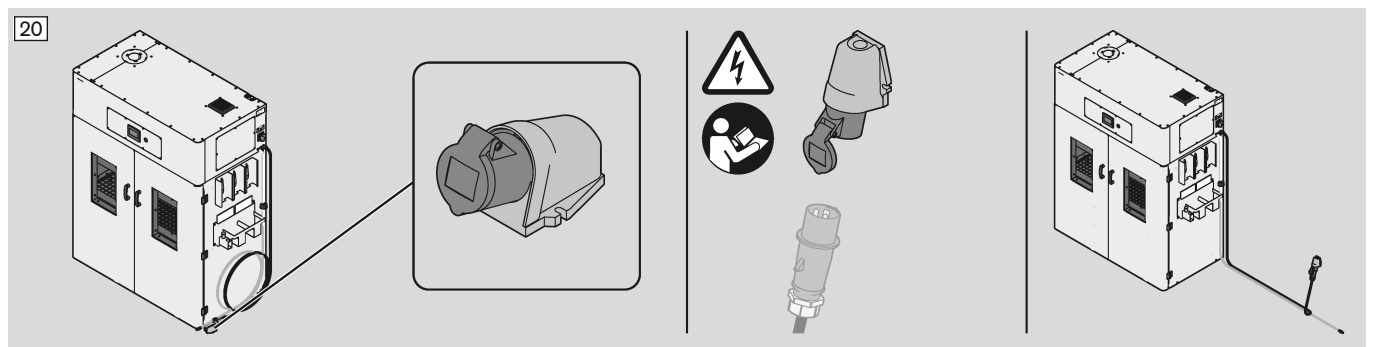


9 Installation

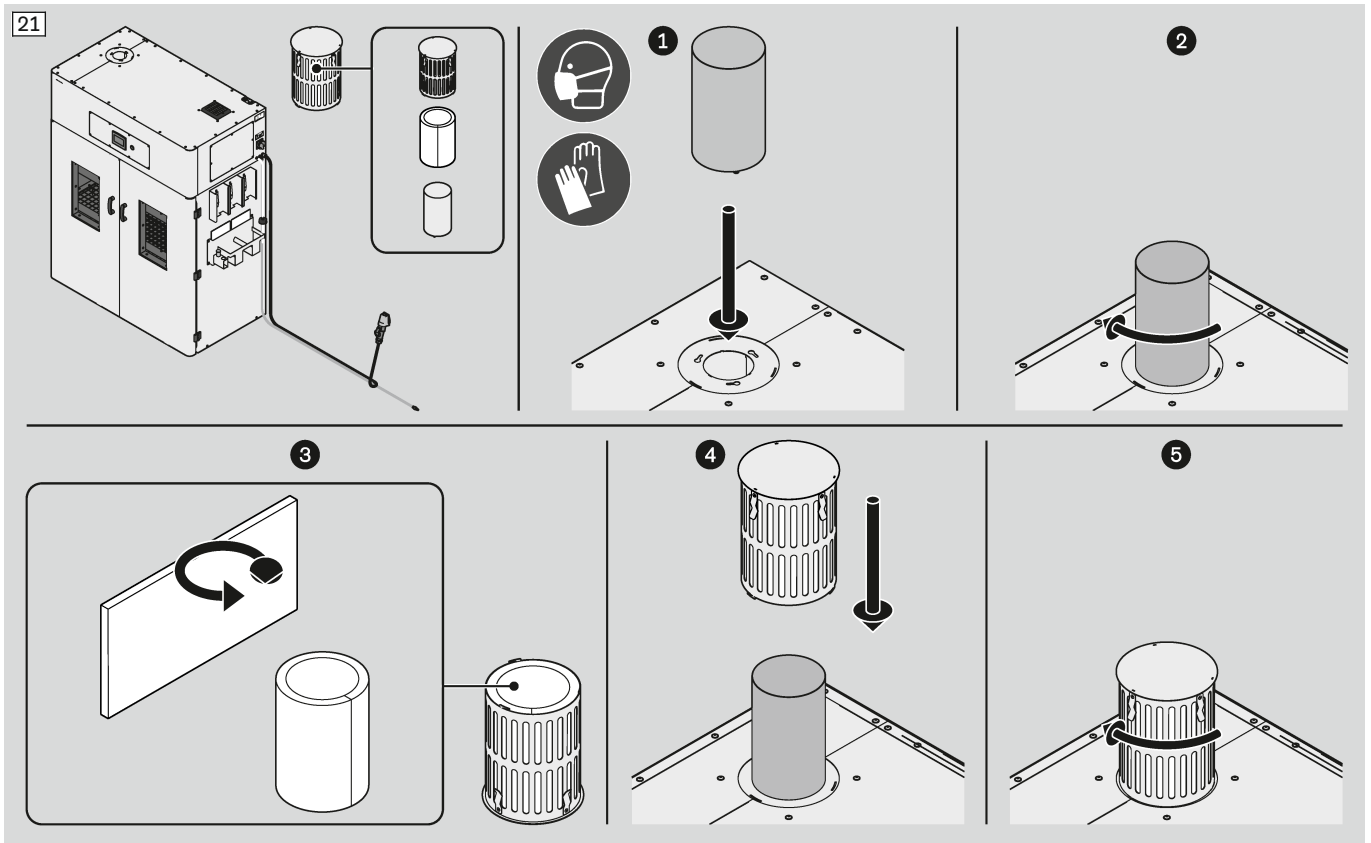
- ▶ **CAUTION! Deploy the following staff for this work:**
operating staff, specialist staff or service technicians.

9.1 Optional (701Z42=1-1): Installation of the socket

- > **Required power connection:**
CEE socket (701Z42=1-1: CEE) (see "Technical data" for connection values - see page 14)
- ▶ If not available, have the supplied socket installed by qualified electrical installation personnel.

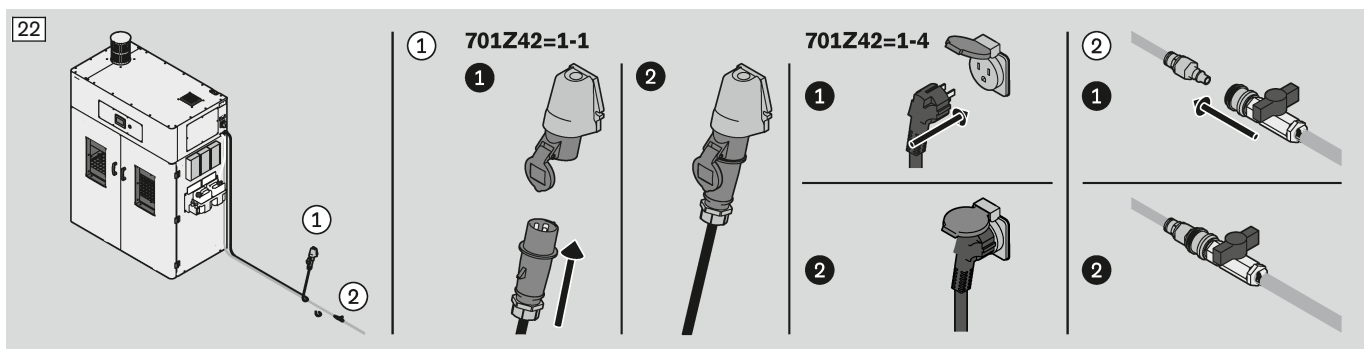


9.2 Mounting the exhaust filter



10 Initial operation

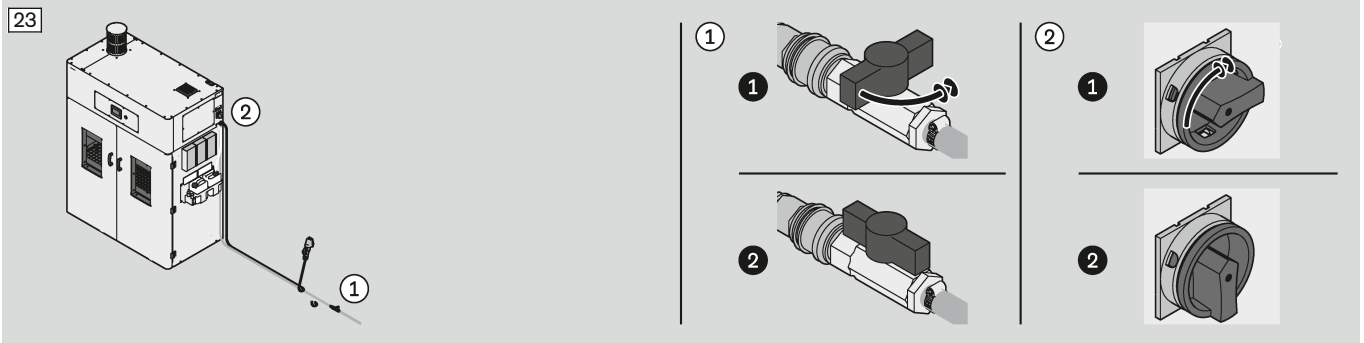
- **CAUTION! Deploy the following staff for this work:**
operating staff, specialist staff or service technicians.



11 Operation

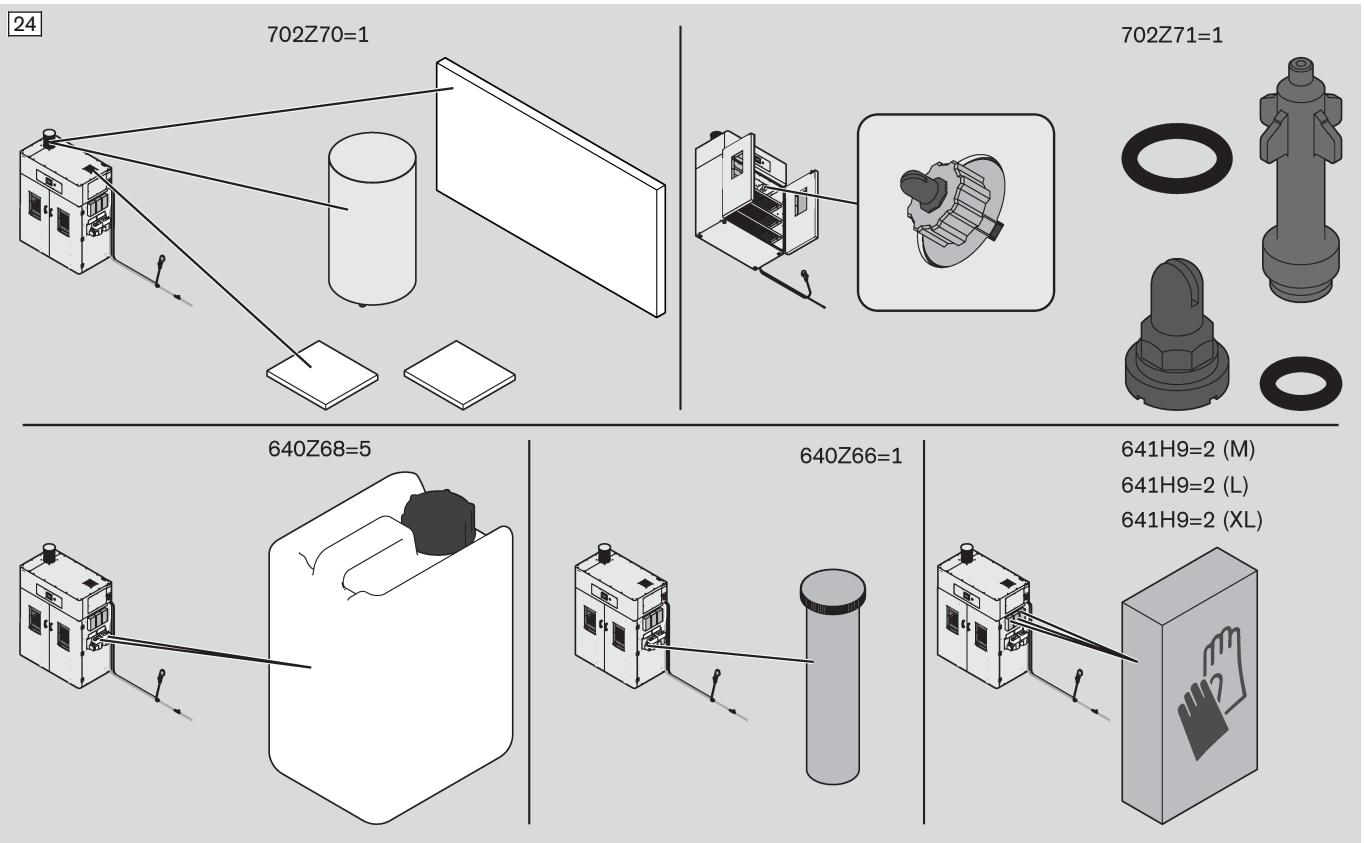
► **INFORMATION: Deploy the following staff for this work:**
operating staff

11.1 Switching on the product

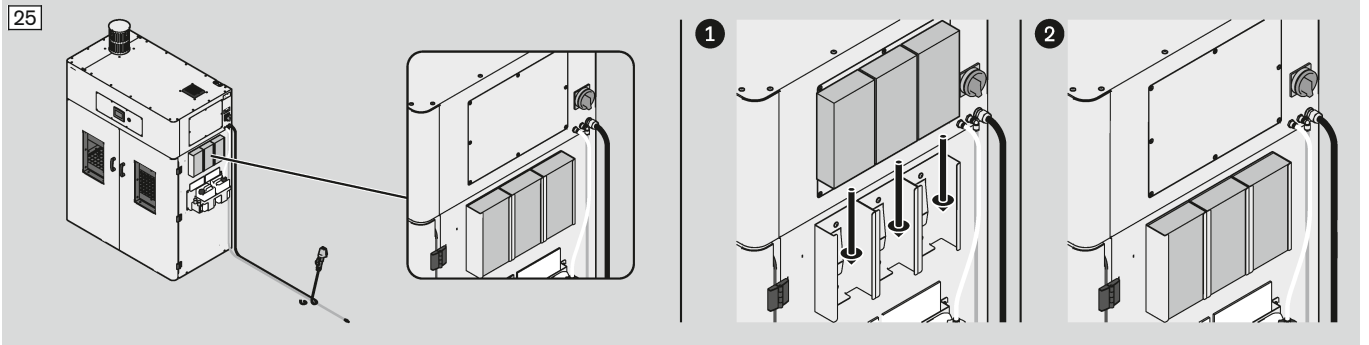


11.2 Refilling consumables

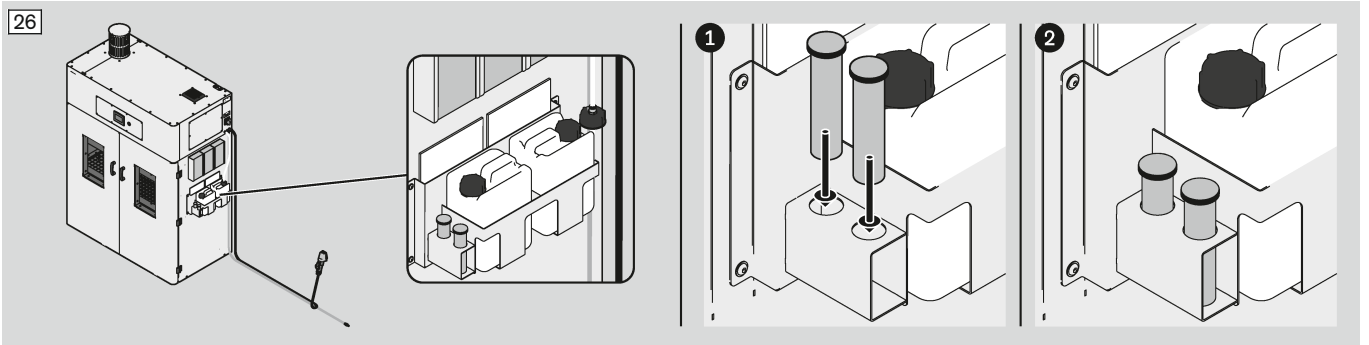
Recommended stocking of spare parts and consumables



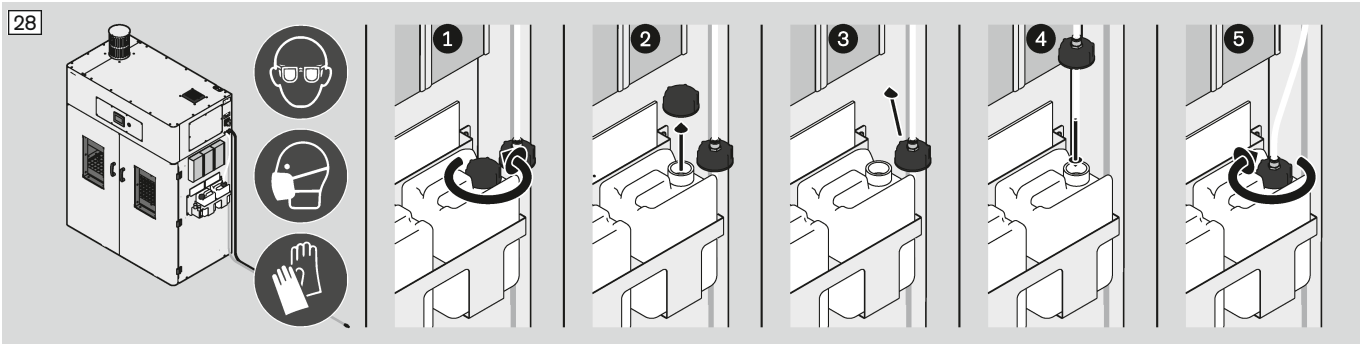
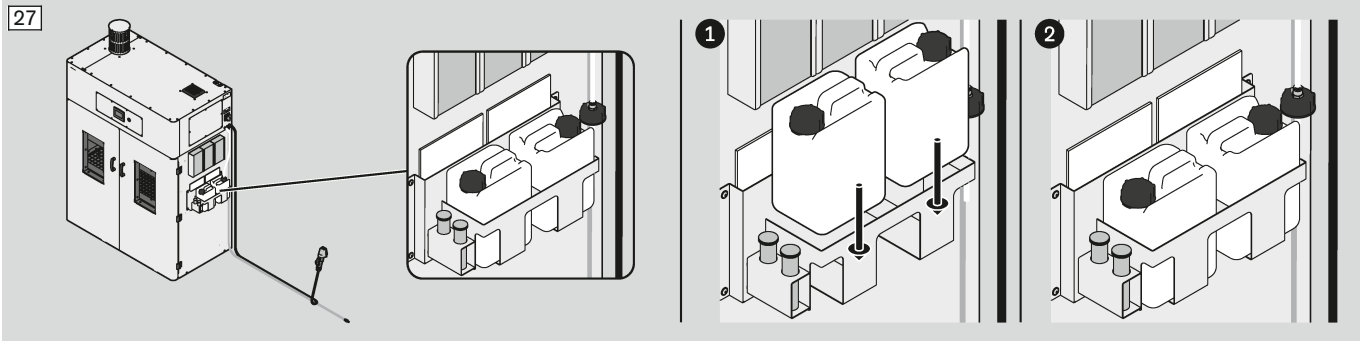
Protective gloves



Test strips

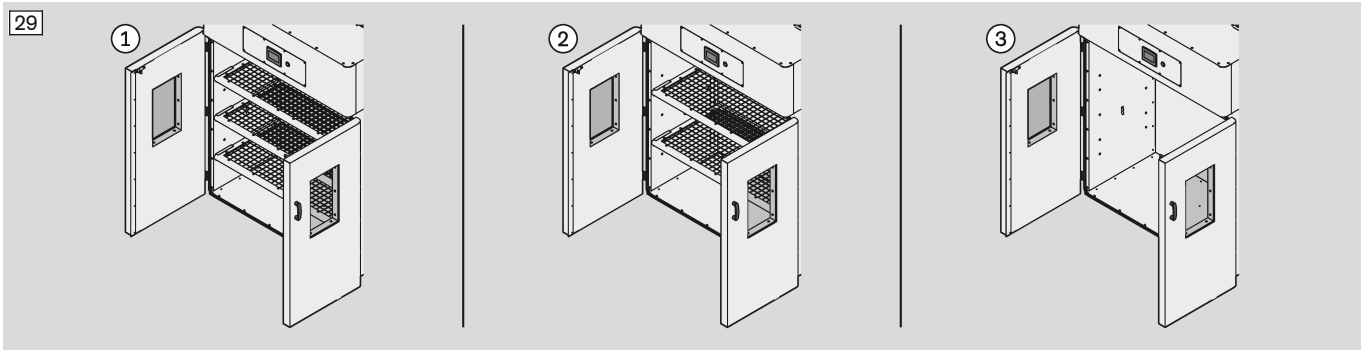


Disinfectant

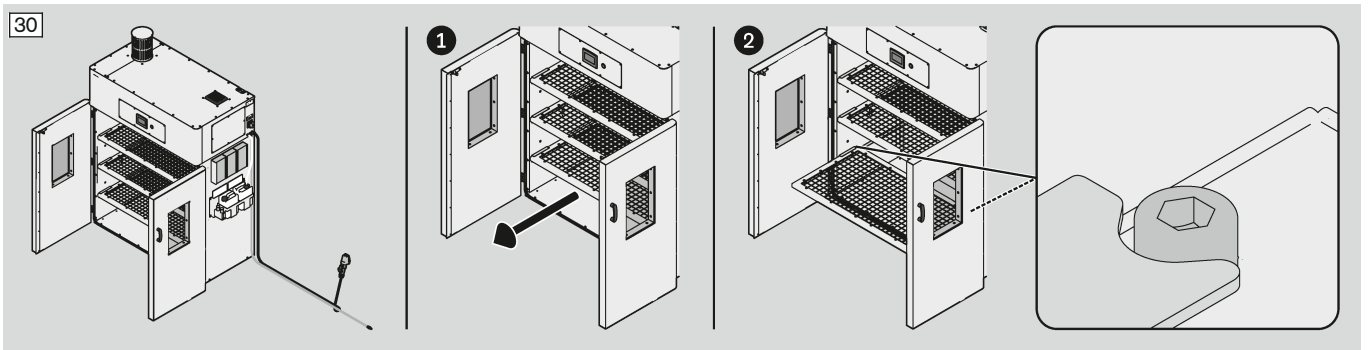


11.3 Using the shelves

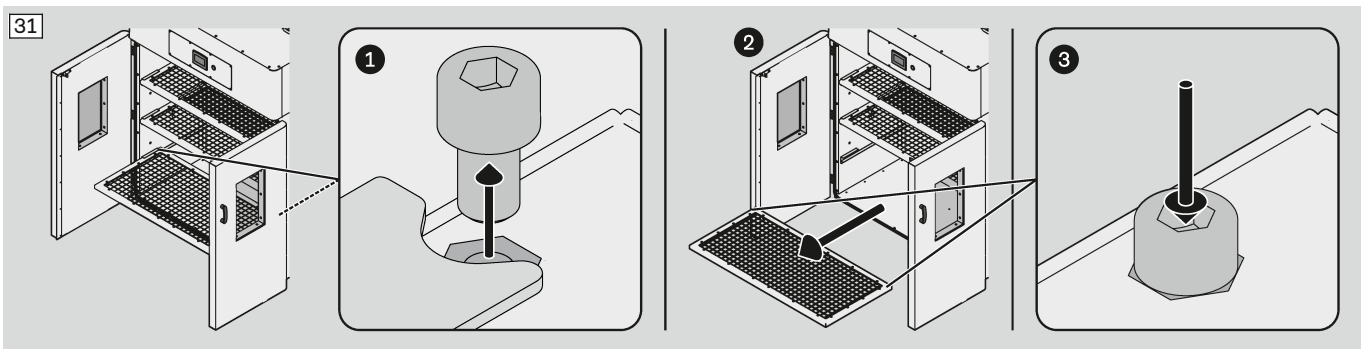
Shelves: ① Standard, ② Alternative positioning (example), ③ None



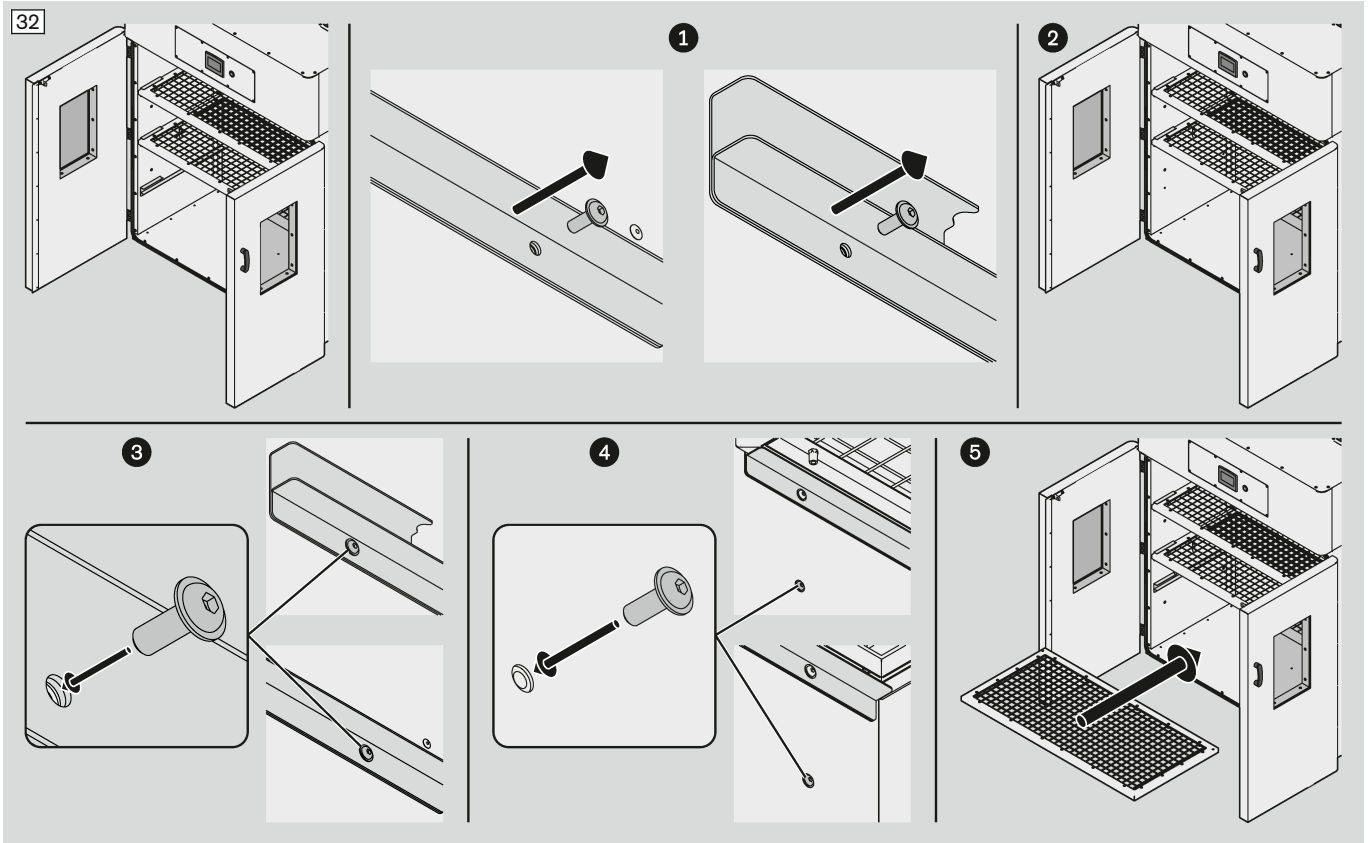
Pulling out the shelf



Removing the shelf

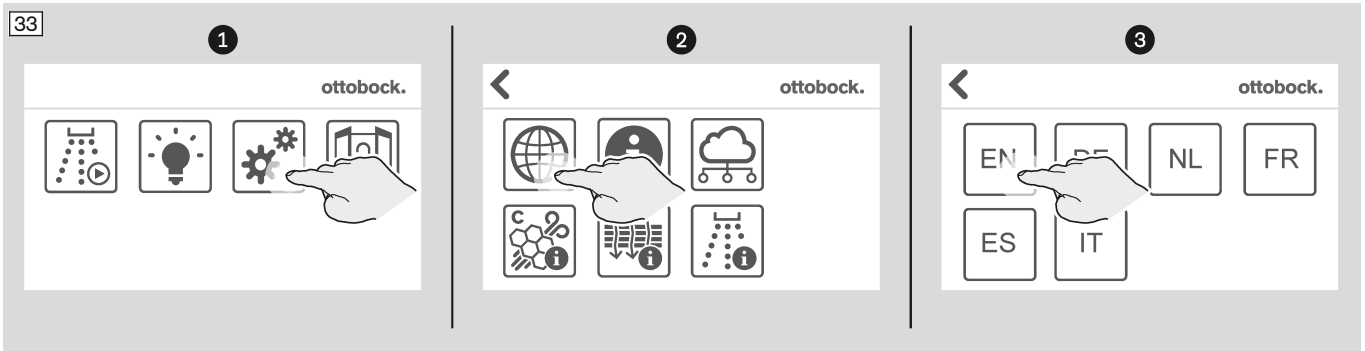


Repositioning a shelf

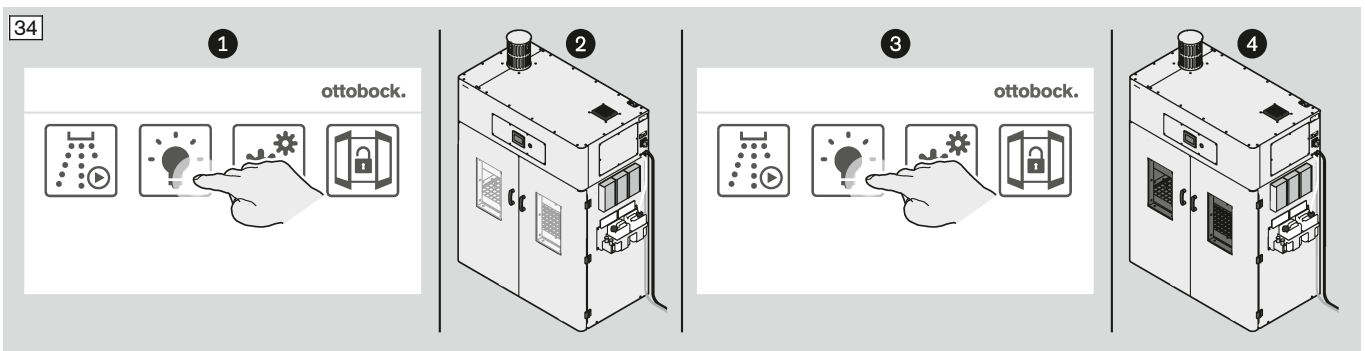


11.4 Using the touchscreen

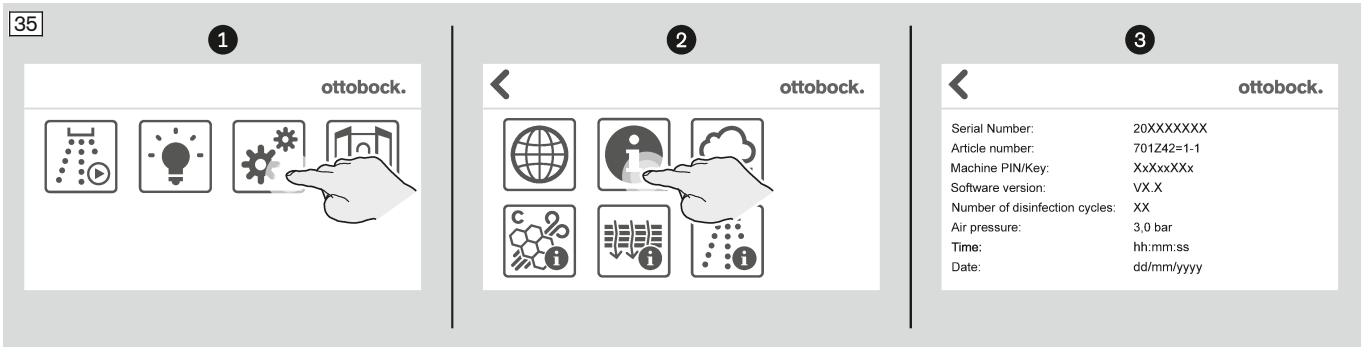
11.4.1 Changing the user interface language



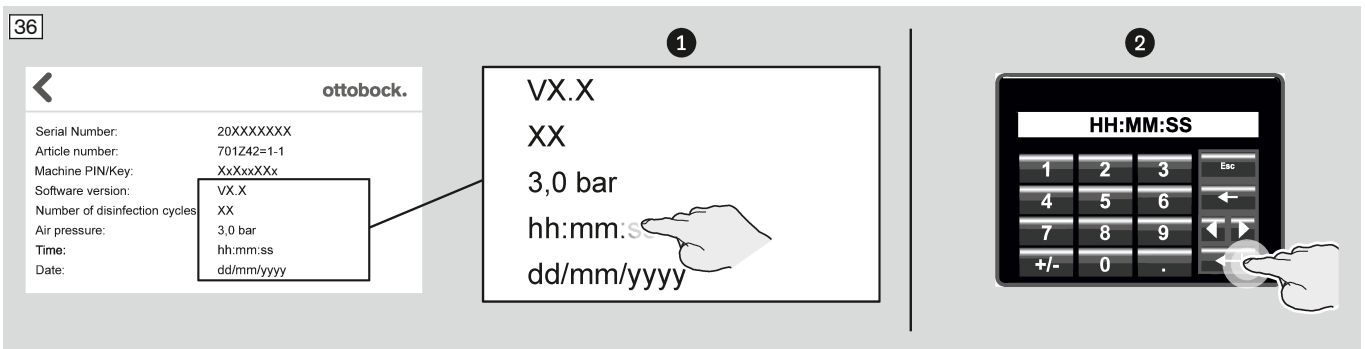
11.4.2 Switching the light on/off



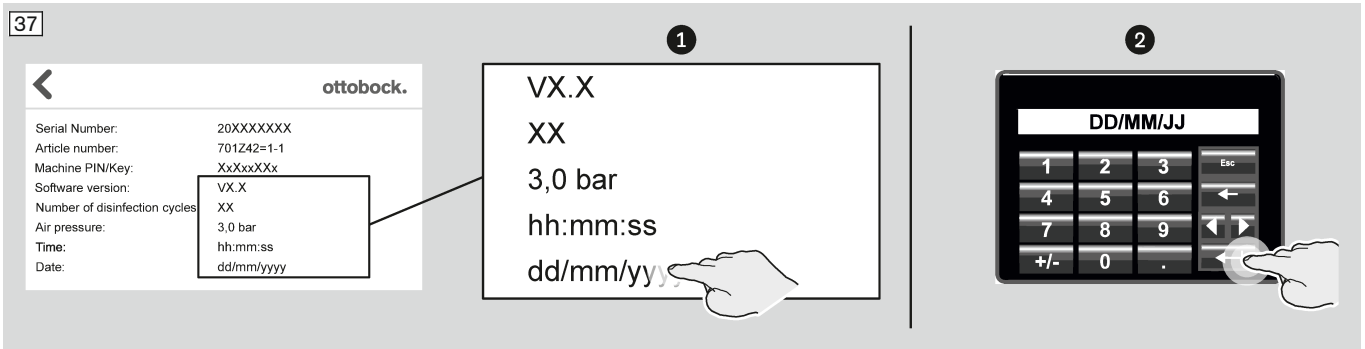
11.4.3 Displaying system information



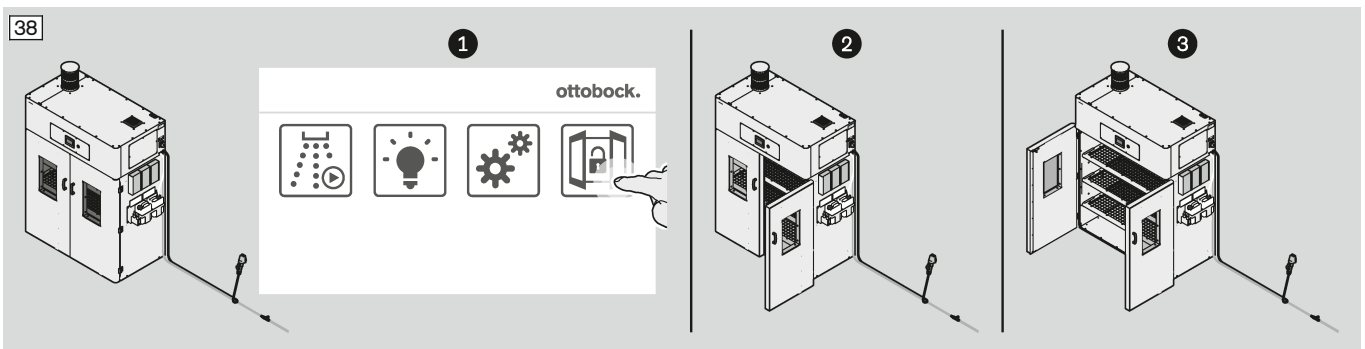
11.4.3.1 Setting the time



11.4.3.2 Setting the date



11.4.4 Unlocking the doors

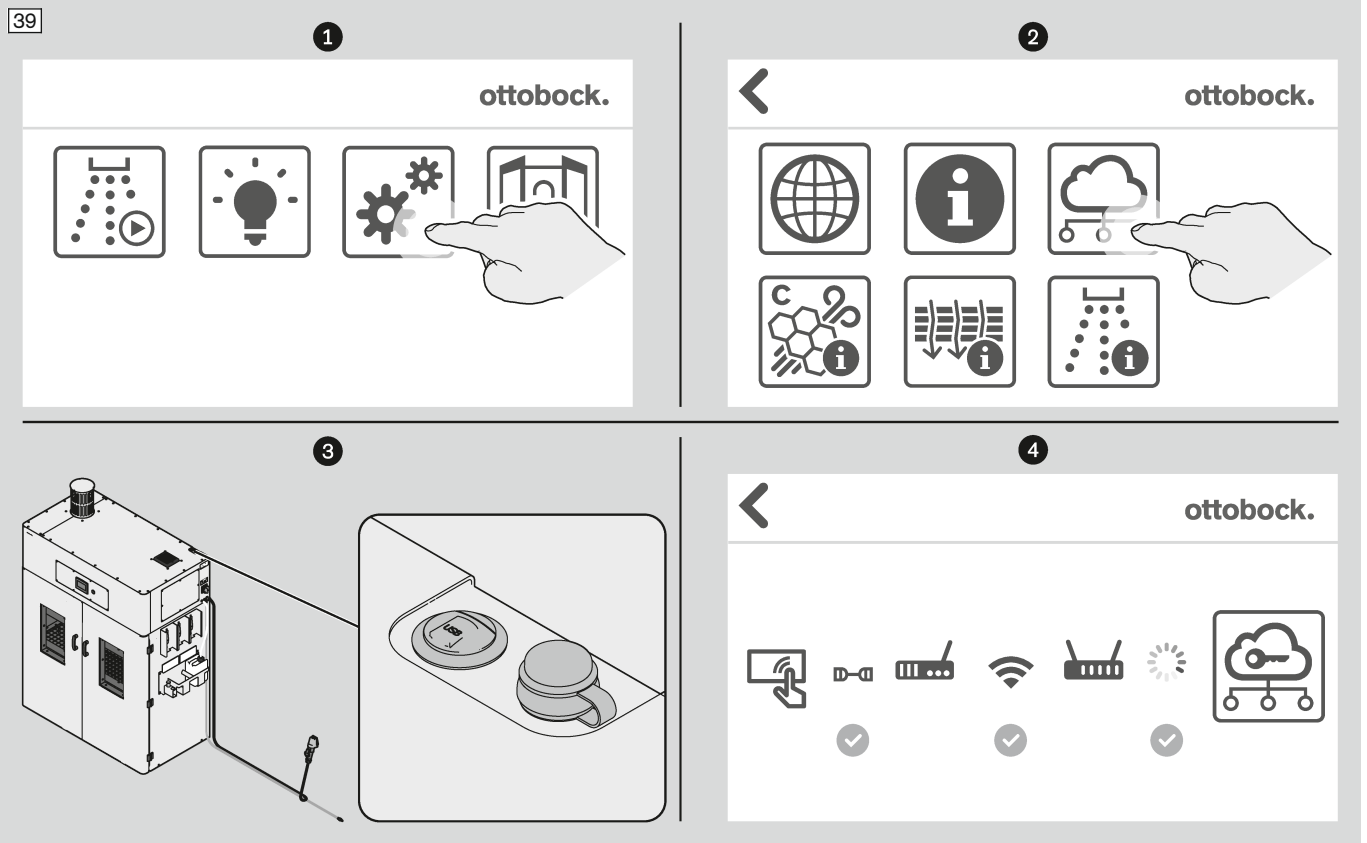


11.4.5 Optional: Connecting the machine to the cloud

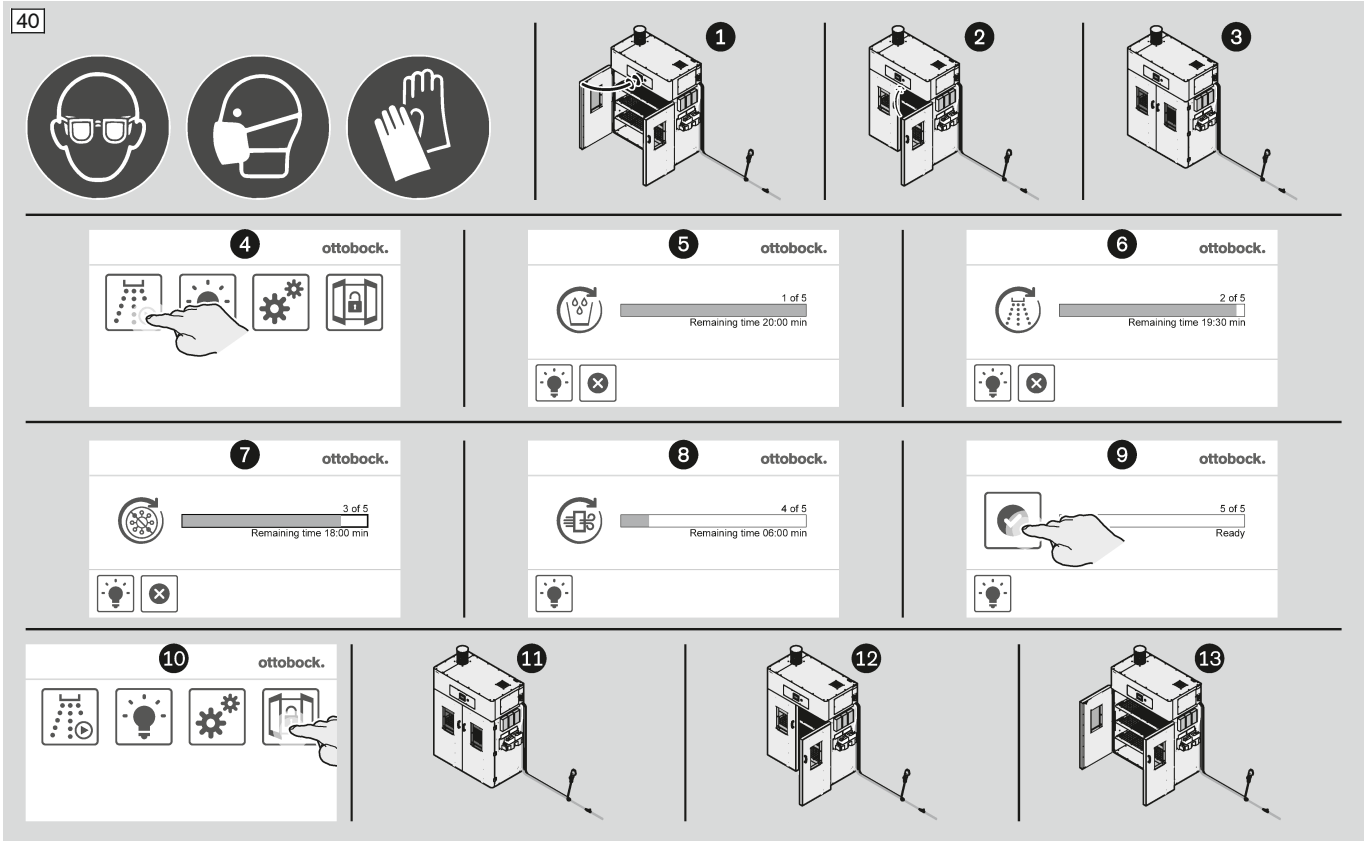
INFORMATION

The machine is prepared for cloud connectivity (Digital workshop). Additional devices are necessary for this. These devices are not available yet.

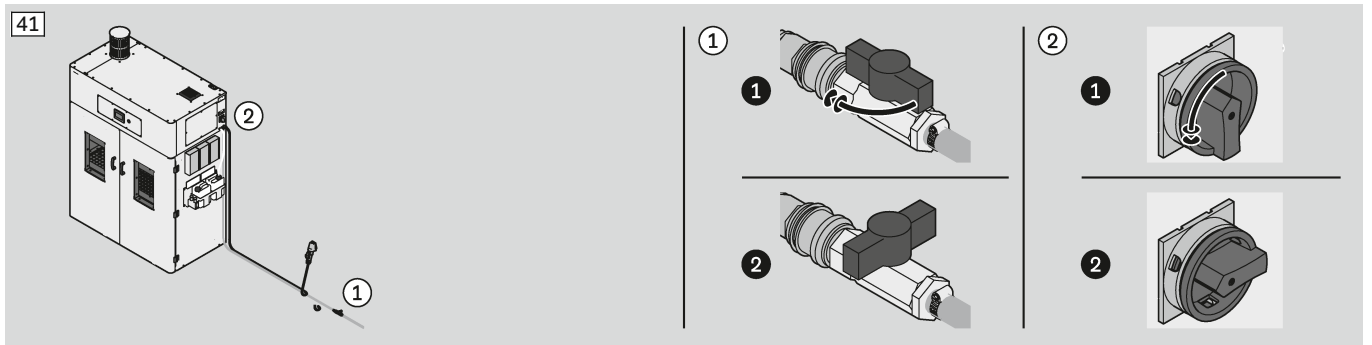
► Contact the manufacturer to find out more about the cloud connectivity and the availability of the necessary devices (customersupport.pe@ottobock.com).



11.4.6 Starting the disinfection



11.5 Switching off the product



11.6 Cleaning

⚠ CAUTION

Poor cleaning of the floor in the workspace

Injury due to slipping on dirty floor

- ▶ Clean the floor if dirty.

NOTICE

Improper cleaning

Damage to product due to use of improper cleaning agents

- ▶ Do not use any aggressive cleaning agents.
- ▶ Do not use water or pressure washers.
- ▶ Do not use compressed air.
- ▶ Use a suitable vacuum cleaner for dust and chips.

Cleaning light soiling

- 1) Clean the product with a damp, soft cloth.
- 2) Dry the product with a soft cloth.
- 3) Allow to air dry in order to remove residual moisture.

Cleaning heavier soiling

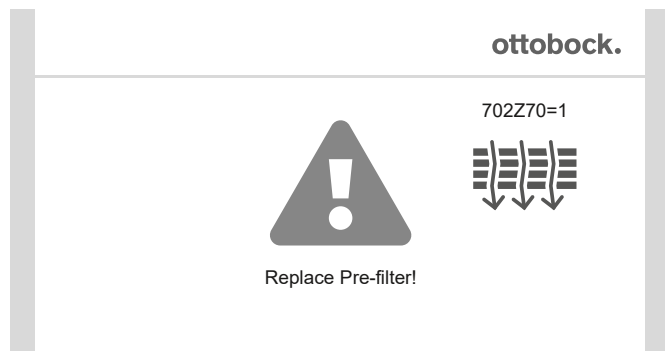
> **Required materials:** Cleaning cloth, 634A58 Isopropyl Alcohol, soft cloth

- 1) **NOTICE! Verify material compatibility! Do not remove lubricant from bearing points!**
Clean the product with a cleaning cloth and isopropyl alcohol.
- 2) Dry the product with a cloth.

12 Troubleshooting

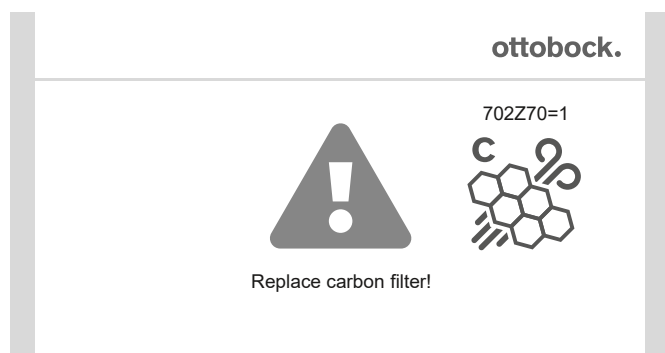
12.1 Error messages

12.1.1 Error message "Replace pre-filter"



Information on this can be found in the section "Changing the pre-filter" – see page 39.

12.1.2 Error message "Replace carbon-filter"



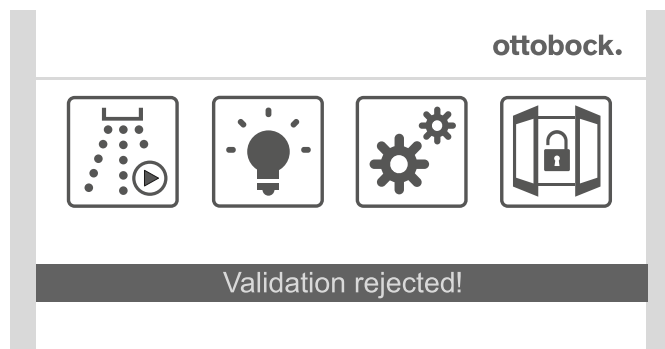
Information on this can be found in the section „Changing the exhaust filter“ – see page 41.

12.1.3 Error message "Replace nozzle"



Information on this can be found in the section „Changing the spray nozzle“ – see page 43.

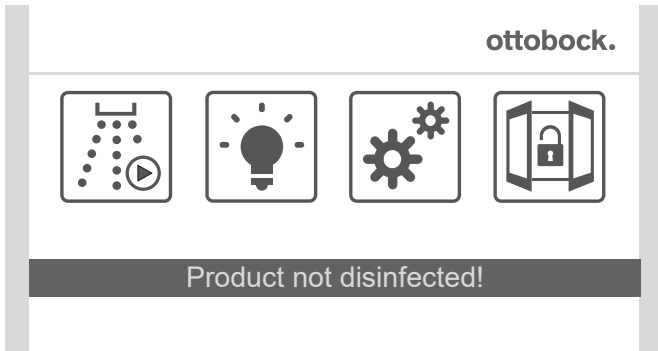
12.1.4 Error message "Validation rejected!"



The checking of the disinfectant effect was not successful.

- ▶ Start the disinfection again (section "Starting the disinfection" – see page 29).
A check of the the disinfectant effect is carried out again (section "Checking the disinfectant effect" – see page 37).

12.1.5 Error message "Product not disinfected!"

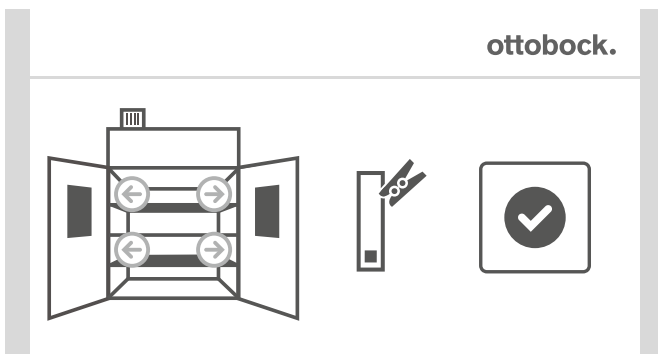


The product was not disinfected.

- ▶ Start the disinfection again (section "Starting the disinfection" – see page 29).

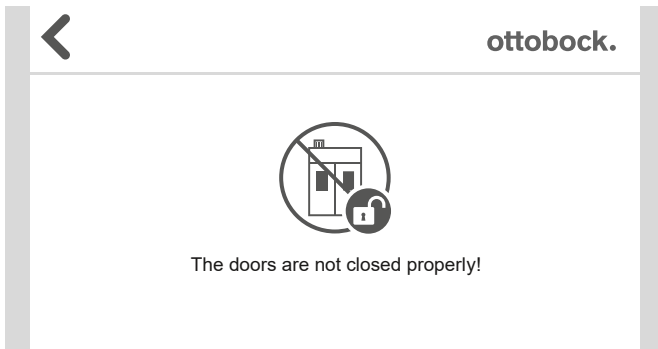
12.2 System messages

12.2.1 "Checking the disinfectant effect" system message



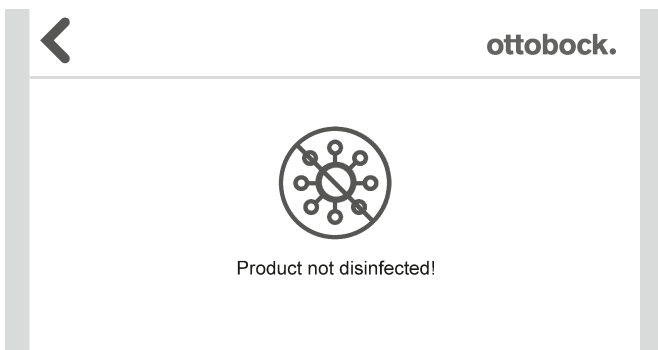
Information on this can be found in the section „Checking the disinfectant effect“ – see page 37.

12.2.2 "The doors are not closed properly!" system message



Close the doors properly so that they can be locked by the control unit.

12.2.3 "Product not disinfected!" system message



The product was not disinfected.

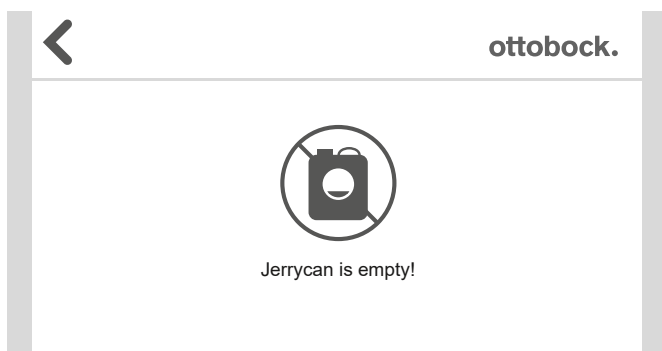
- ▶ Start the disinfection again.

12.2.4 “Nozzle clogged!” system message



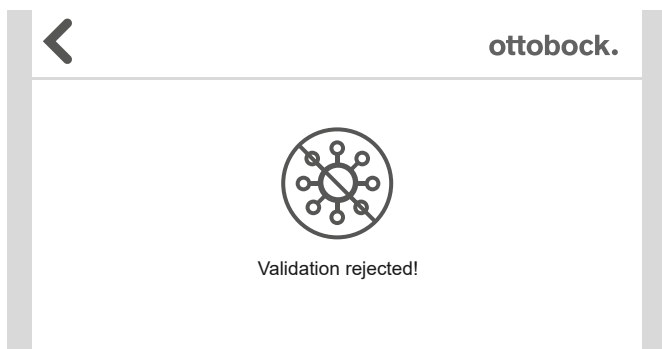
- ▶ Change the spray nozzle (section „Changing the spray nozzle“ – see page 43).

12.2.5 “Jerrycan is empty!” system message



- ▶ Change the jerrycan (section „Refilling consumables“ – see page 22).

12.2.6 “Validation rejected!” system message



The checking of the disinfectant effect was not successful.

- ▶ Start the disinfection again (section "Starting the disinfection" – see page 29).
A check of the the disinfectant effect is carried out again (section "Checking the disinfectant effect" – see page 37).

13 Maintenance

Product maintenance encompasses the following areas:

- **Inspection**
During the inspection the product is checked to determine whether it is in good condition.
- **Maintenance**
During maintenance actions are taken to maintain the good condition of the product.
- **Repair**
Repair refers to repair measures taken to restore the product to good condition.

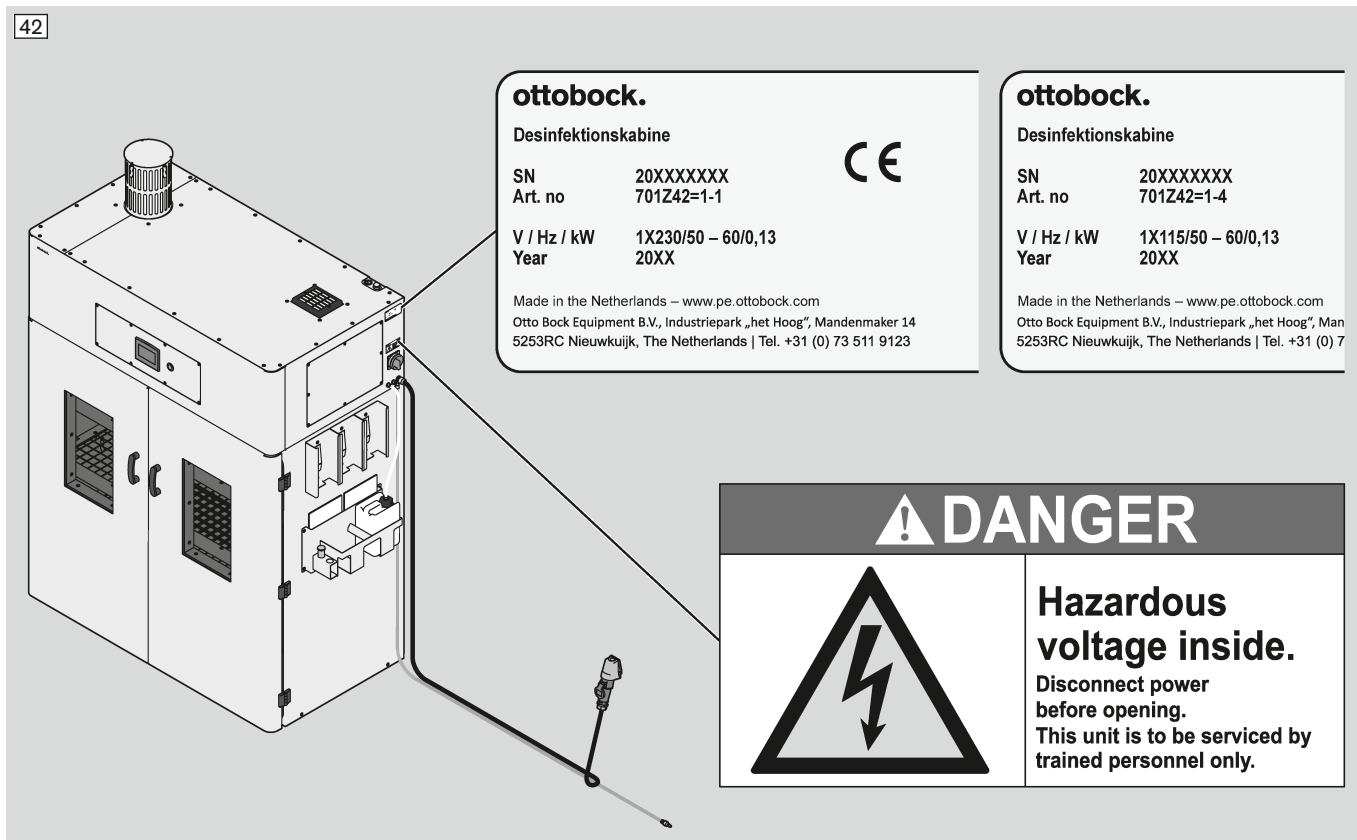
Maintenance plan

Inspection					
Section	daily	weekly	monthly	half-yearly	yearly
13.1.1 Checking the nameplate and the labels (see page 35)	X				
13.1.2 Checking the cables (see page 36)	X				
13.1.3 Checking the disinfectant effect (see page 37)	In the case of a system message on the touchscreen				
Maintenance					
Section	daily	weekly	monthly	half-yearly	yearly
13.2.1 Changing the pre-filter (see page 39)	In the case of a system message on the touchscreen				
13.2.2 Changing the exhaust filter (Changing the active carbon filters and exhaust filter)	In the case of a system message on the touchscreen				
13.2.3 Changing the spray nozzle (see page 43)	In the case of a system message on the touchscreen				

13.1 Inspection

13.1.1 Checking the nameplate and the labels

- ▶ **NOTICE! Deploy the following staff only for these inspection tasks:** operating staff, specialist staff or service technicians.
- ▶ Carry out the following inspections **daily**:
- ▶ Clean the nameplate and the labels if soiled.
- ▶ Replace labels as required.
- ▶ Order any missing labels from the manufacturer and attach to product.



13.1.2 Checking the cables

- ▶ **WARNING! Deploy the following staff only for these inspection tasks:**

Inspection:

operating staff

Repair:

specialist staff or service technicians

- ▶ Carry out the following inspections **daily**:

- ▶ Pull the plug out of the socket.

- ▶ Check the cable for damage.

- ▶ **In case of damage:**

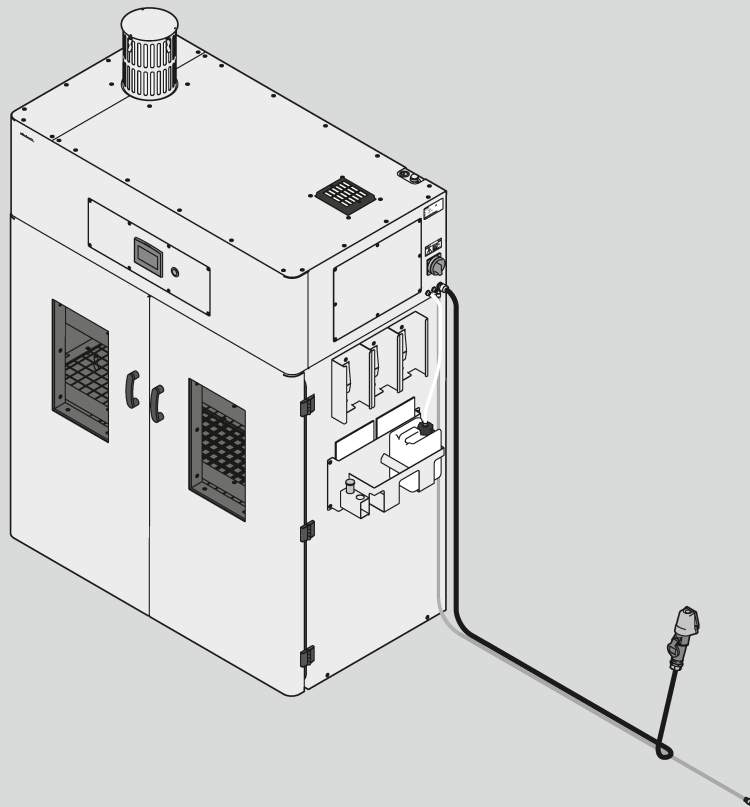
Shut down the product (do not insert the mains plug again!).

Have the damage inspected by specialist staff (electrician).

- ▶ **In case of no damage:**

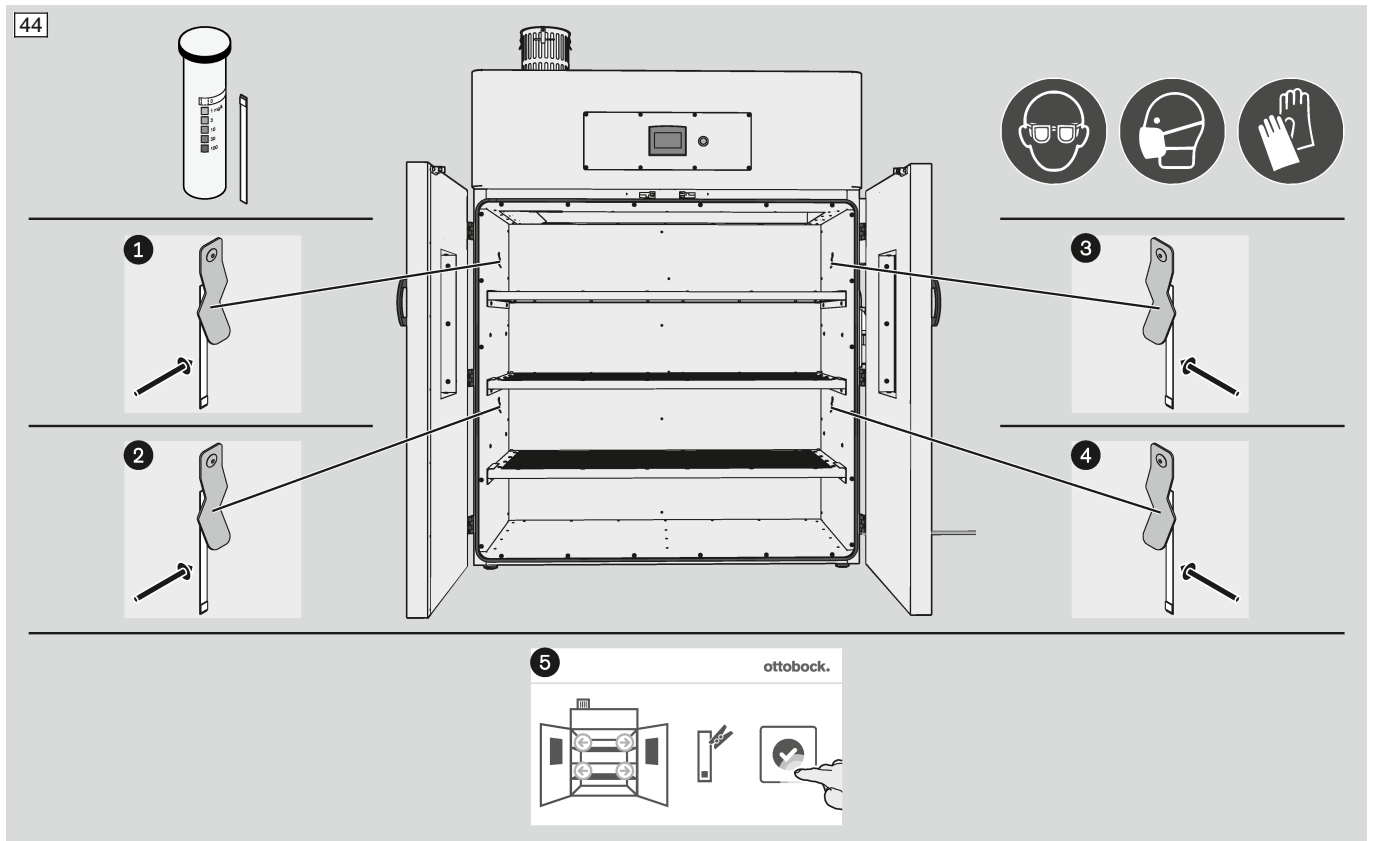
Insert the plug into the socket.

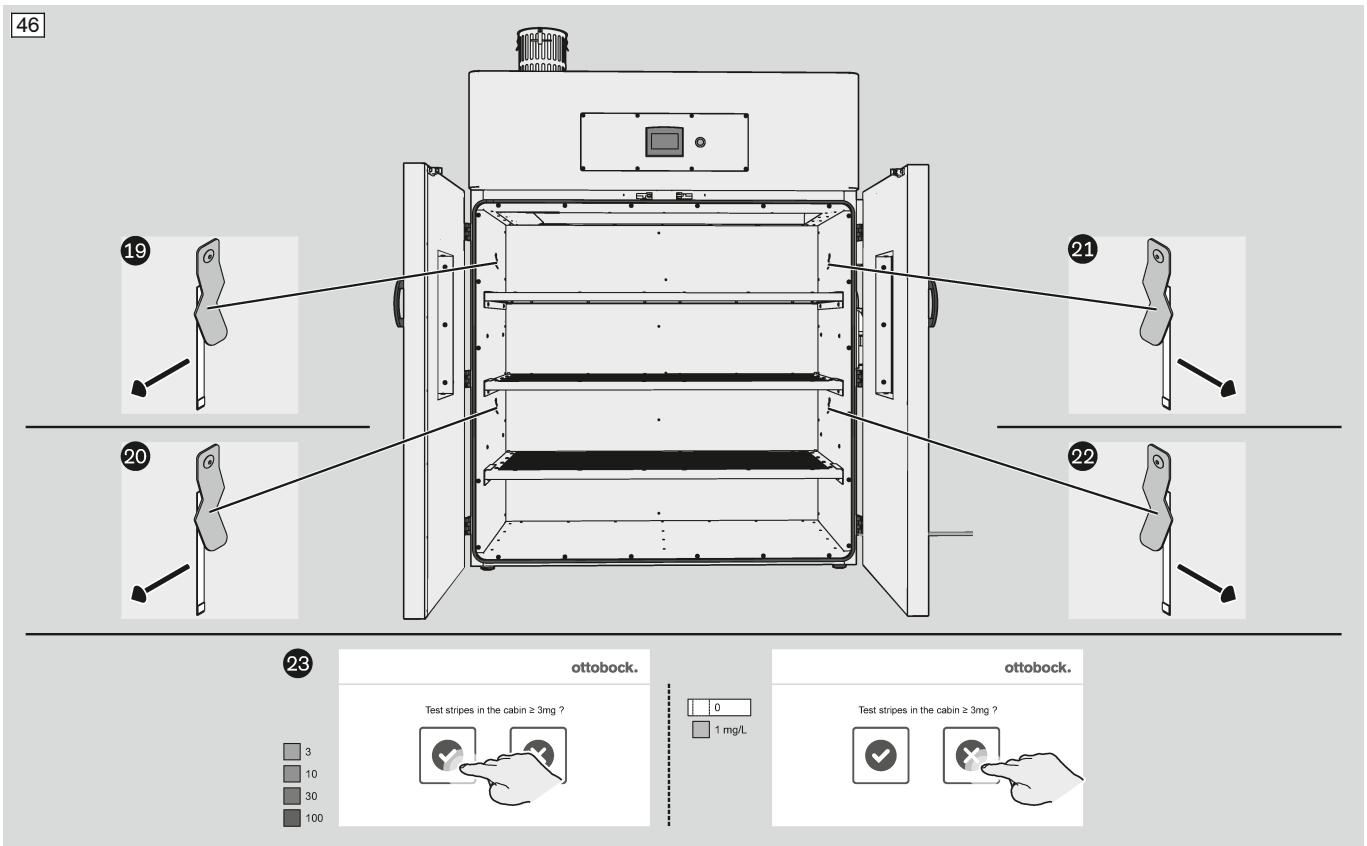
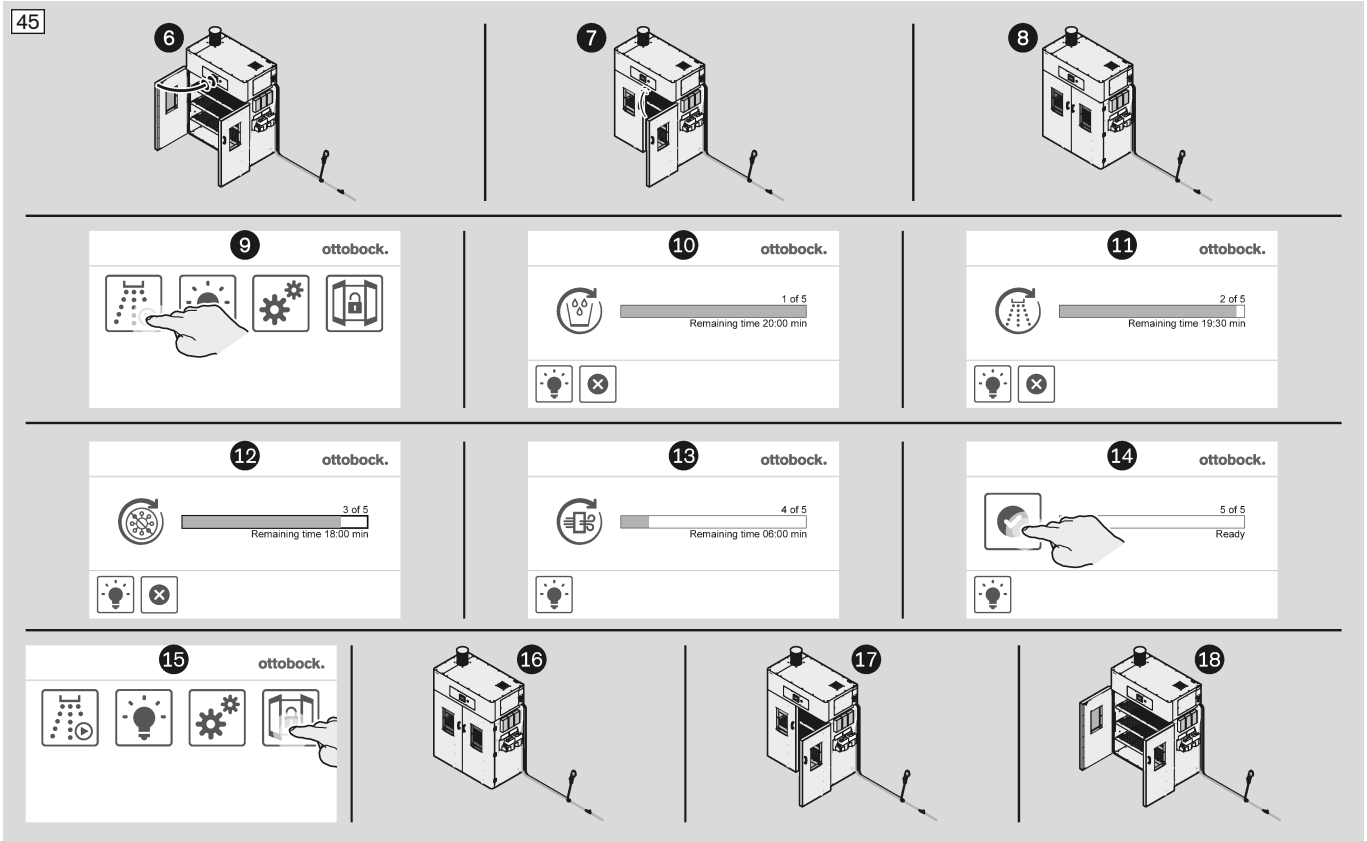
43



13.1.3 Checking the disinfectant effect

- ▶ **NOTICE! Deploy the following staff only for these inspection tasks:** operating staff, specialist staff or service technicians.
- ▶ In case of a corresponding system message carry out the following maintenance work:
- ▶ Check the disinfectant effect according to the illustration.





INFORMATION

► If the test stripes indicate **0 or 1 mg/L**, repeat the check one or if necessary two times. If the test stripes still indicate **0 or 1 mg/L**, do not use the product. Contact the manufacturer's technical service.

13.2 Maintenance

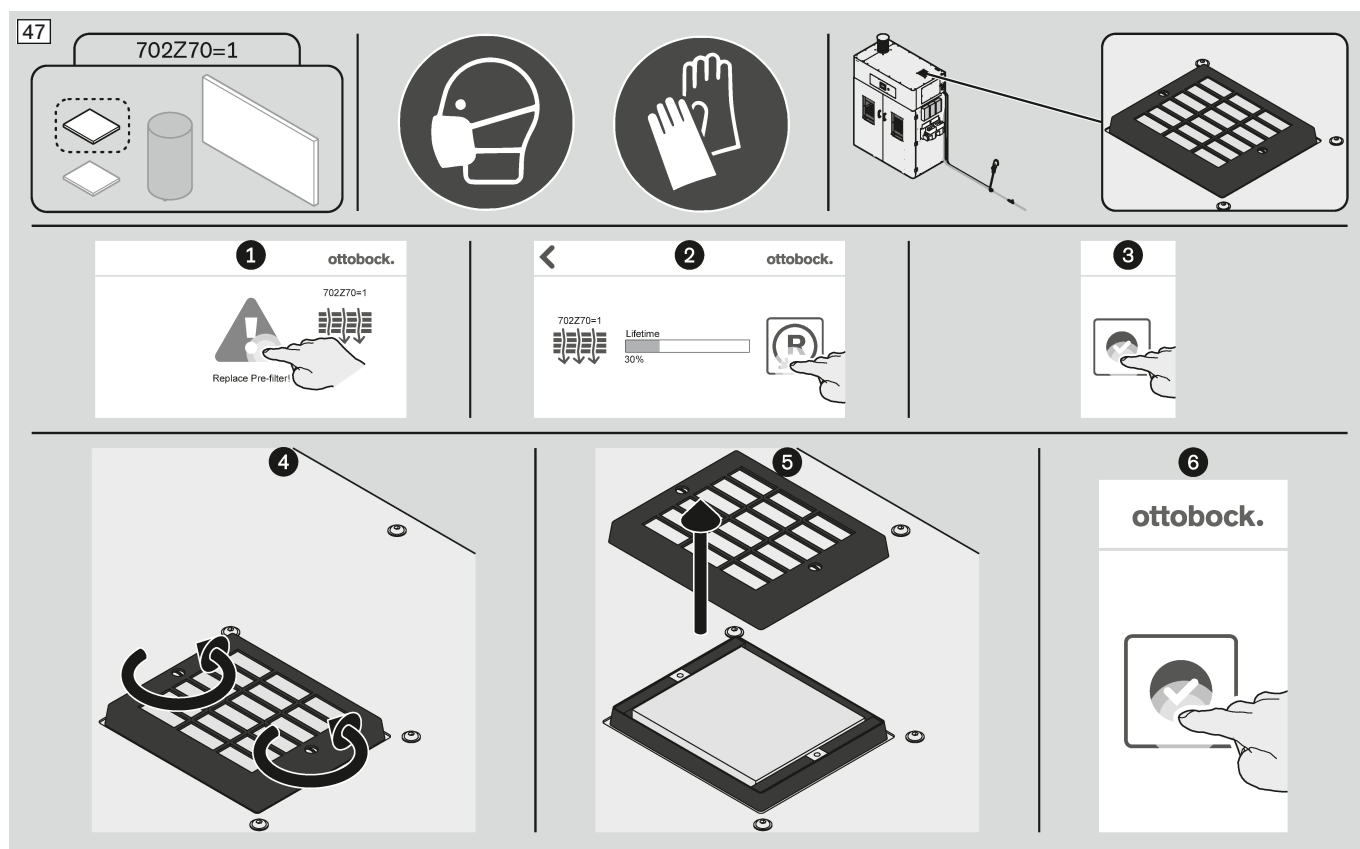
INFORMATION

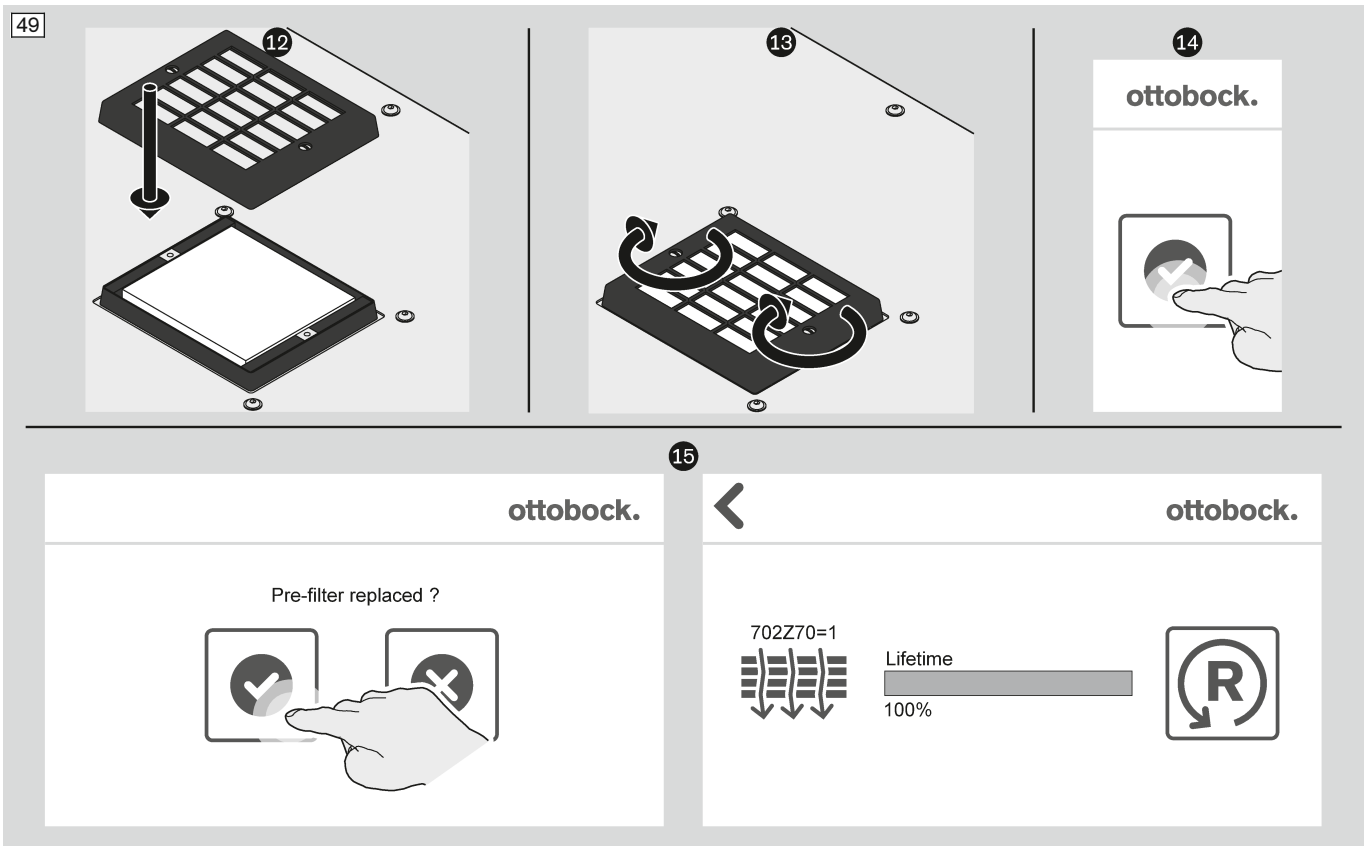
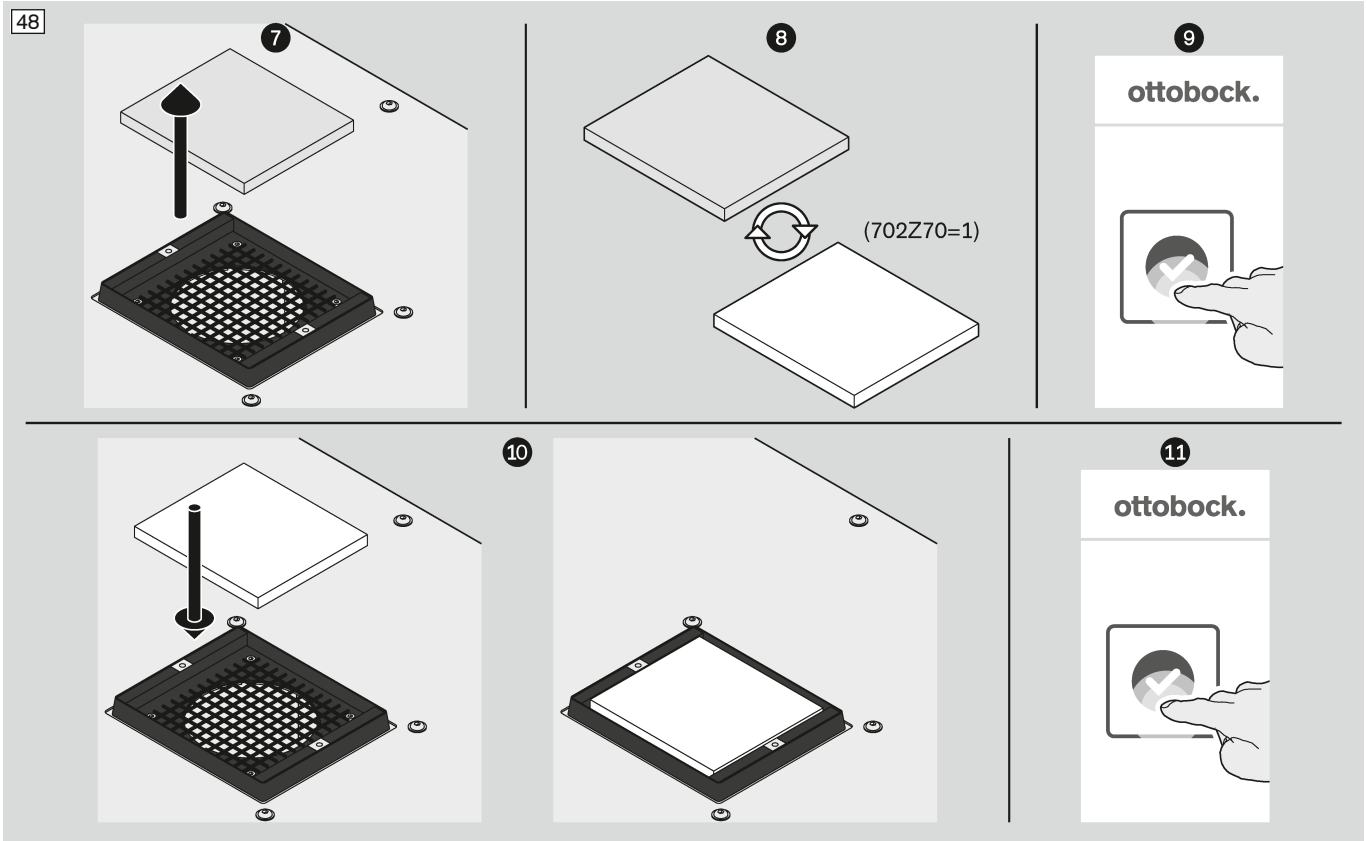
Depending on the user country there may be differing regulations pertaining to inspection, maintenance and other tests.

► Please observe all of your country's regulations that apply to operation of the product.

13.2.1 Changing the pre-filter

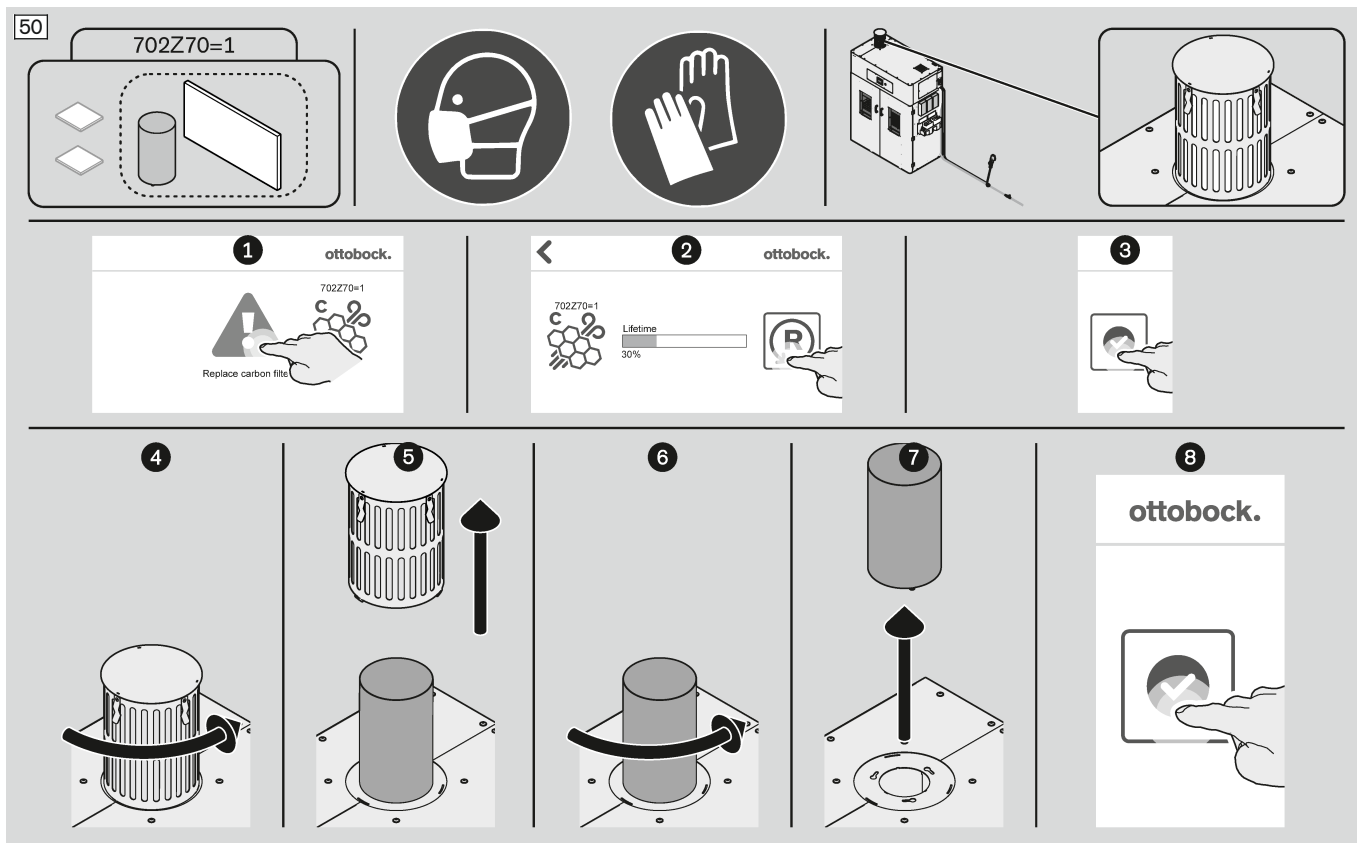
- **WARNING! Deploy the following staff only for this maintenance work:**
specialist staff or service technicians
- In case of a corresponding system message carry out the following maintenance work:
- Change the pre-filter according to the illustrations.

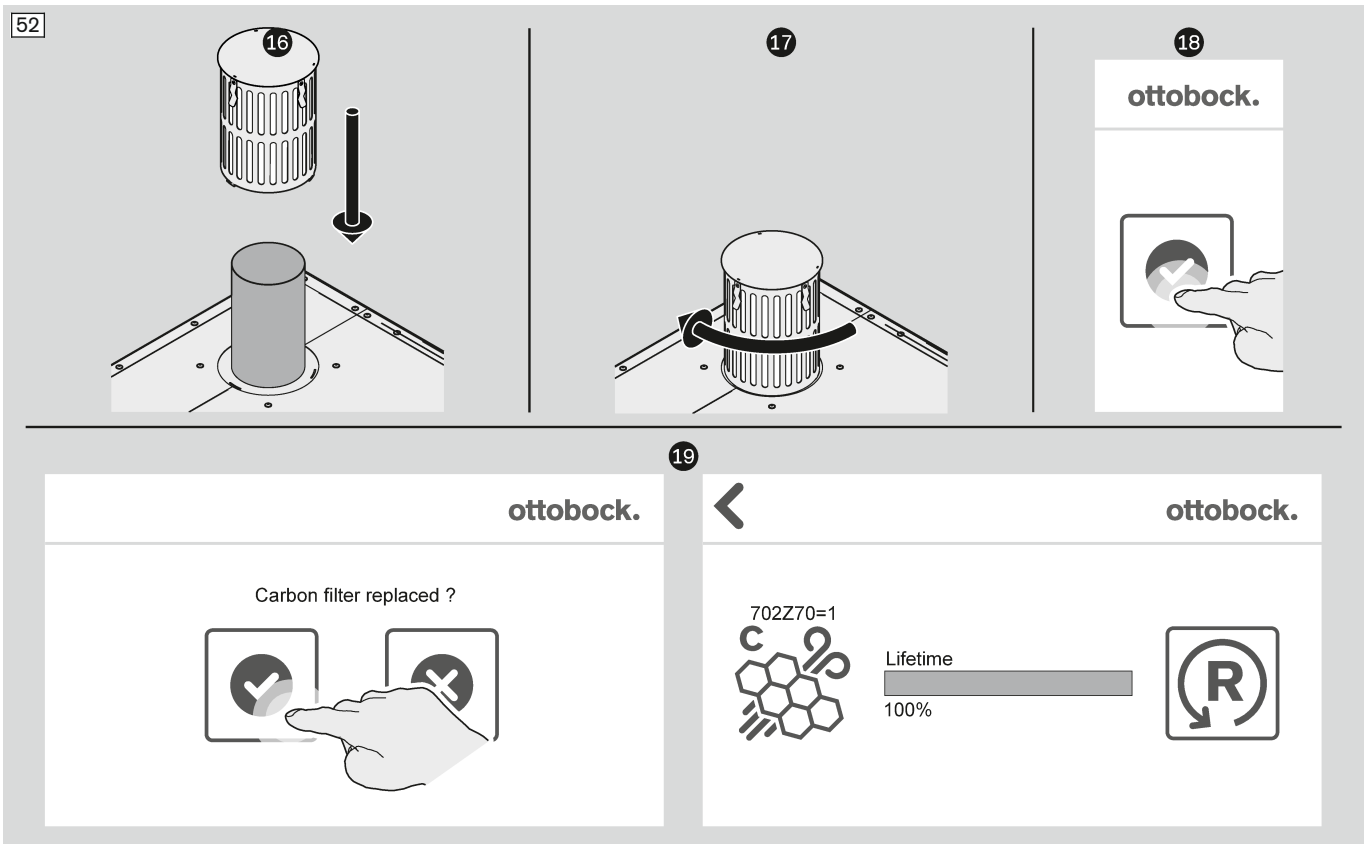
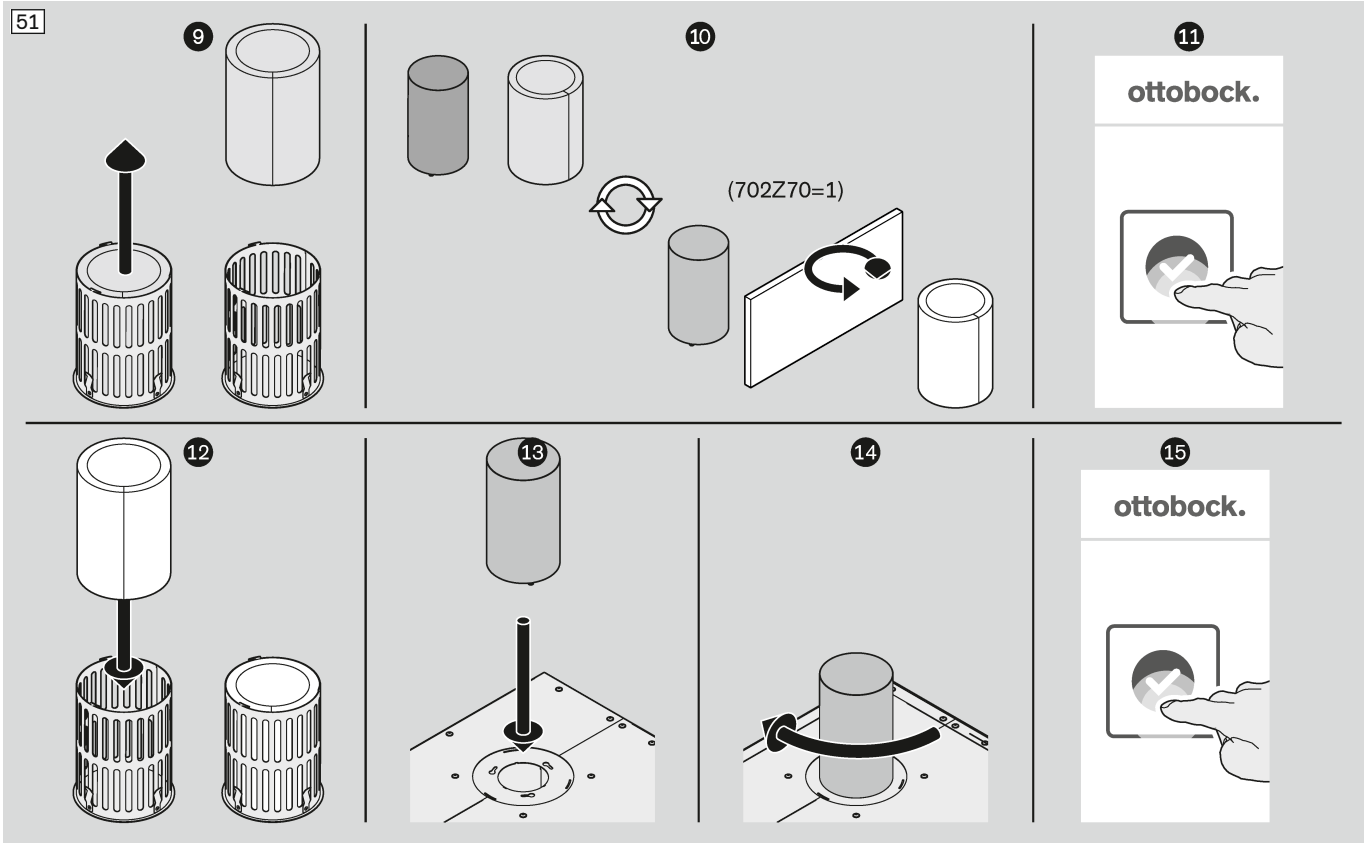




13.2.2 Changing the exhaust filter

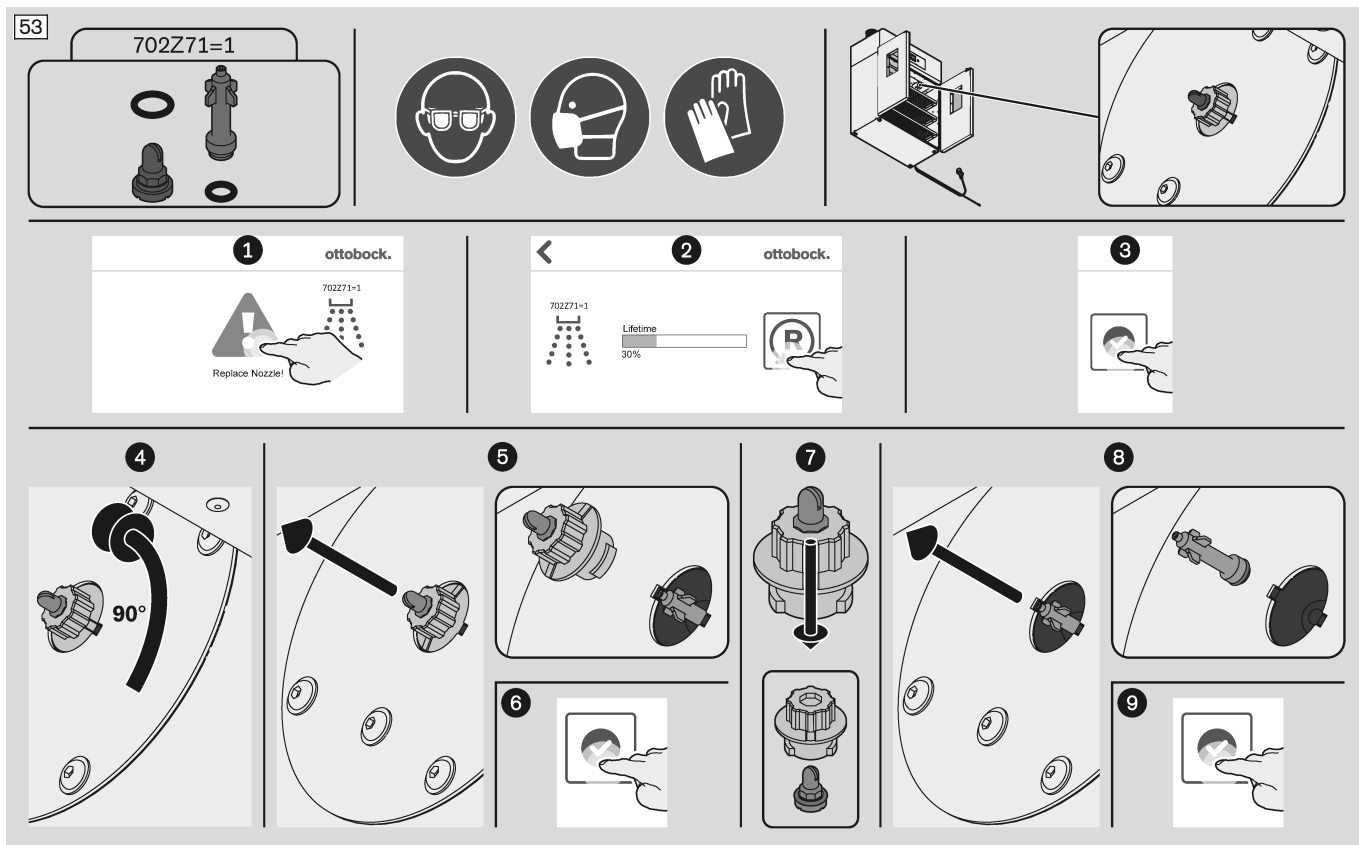
- ▶ **WARNING! Deploy the following staff only for this maintenance work:**
specialist staff or service technicians
- ▶ In case of a corresponding system message carry out the following maintenance work:
- ▶ Change the exhaust filter according to the illustrations.





13.2.3 Changing the spray nozzle

- ▶ **WARNING! Deploy the following staff only for this maintenance work:**
specialist staff or service technicians
- ▶ In case of a corresponding system message carry out the following maintenance work:
- ▶ Change the spray nozzle according to the illustrations.



13.3 Repair

⚠ WARNING

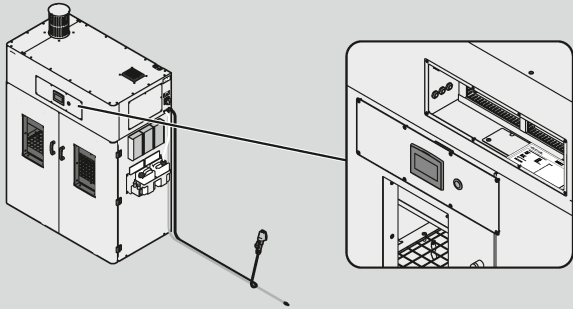
Repair by inappropriate employee

Death and serious injury as well as damage to the product due to insufficient expertise

- ▶ Repair work may only be carried out by a service technician authorised by the manufacturer.

13.4 Electrical diagram

56



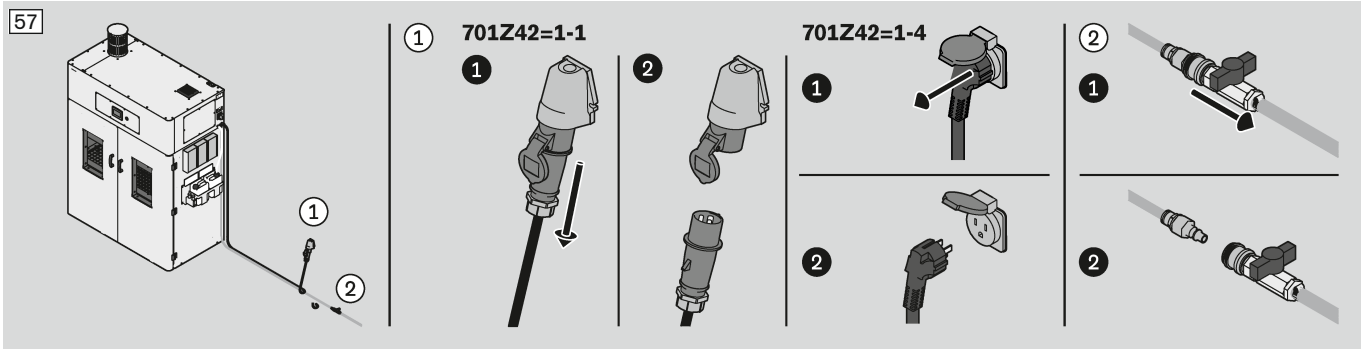
ottobock.

Ottobock Equipment S.V.
 Oudegraven 110 1940
 6525 GC Heteren (nl)
 Tel: +31 (0)75 290 2222
 Fax: +31 (0)75 291 2222
 E-mail: www@ottobock.com

Project name: Desinfectiecabine Rev. B

Main circuit		Control circuit	Project Ref:
L1 - Black	OK - Black	OK - Black	01
L2 - Blue	OK - Blue	OK - Blue	02
L3 - Green	OK - Green	OK - Green	03
N - Blue	OK - Blue	OK - Blue	04
Control circuit	OK - Green/Yellow	OK - Green/Yellow	05
Control panel	OK - Green/Yellow	OK - Green/Yellow	06
Control panel	OK - Green/Yellow	OK - Green/Yellow	07
Control panel	OK - Green/Yellow	OK - Green/Yellow	08
Control panel	OK - Green/Yellow	OK - Green/Yellow	09
Control panel	OK - Green/Yellow	OK - Green/Yellow	10
Control panel	OK - Green/Yellow	OK - Green/Yellow	11
Control panel	OK - Green/Yellow	OK - Green/Yellow	12
Control panel	OK - Green/Yellow	OK - Green/Yellow	13
Control panel	OK - Green/Yellow	OK - Green/Yellow	14
Control panel	OK - Green/Yellow	OK - Green/Yellow	15
Control panel	OK - Green/Yellow	OK - Green/Yellow	16
Control panel	OK - Green/Yellow	OK - Green/Yellow	17
Control panel	OK - Green/Yellow	OK - Green/Yellow	18
Control panel	OK - Green/Yellow	OK - Green/Yellow	19
Control panel	OK - Green/Yellow	OK - Green/Yellow	20

14 Putting out of operation



15 Disassembly

INFORMATION

Disassembly is carried out in the opposite order to installation (see page 20) and positioning (see page 19).

16 Packaging

INFORMATION

Packaging such as that used for initial delivery is recommended for transport.

17 Disposal

INFORMATION

This product may not be disposed of with regular domestic waste in all jurisdictions. Disposal that is not in accordance with the regulations of the country where the product is used may have a detrimental impact on health and the environment. Please observe the information provided by the responsible authorities in the country of use regarding return, collection and disposal procedures.

18 Legal Information

18.1 Liability

The manufacturer will only assume liability if the product is used in accordance with the descriptions and instructions provided in this document (Operating Instructions). The manufacturer will not assume liability for damage caused by disregard of this document.

18.2 Declaration of Conformity

EC Declaration of Conformity

in accordance with EC Machinery Directive 2006/42/EC, Annex II 1.A

ottobock.

Manufacturer

Ottobock Equipment B.V.

Mandenmaker 14
5253 RC Nieuwkuijk
Netherlands

Person residing in the community and authorised to compile the relevant technical documents

Ottobock Equipment B.V.

Manager R&D
Mandenmaker 14
5253 RC Nieuwkuijk
Netherlands

Description and identification of the machine

Product	Desinfection cabinet
Type	701Z42=1-1, 701Z42=1-4
Trade name	Desinfection cabinet
Function	Desinfection cabinet for disinfecting medical products (e.g. prostheses and orthoses) that may be treated with the machine's disinfectant (Intended installation location: Orthopaedic workshop)

This is to declare in express terms that the machine complies with all of the relevant provisions of the following EC directives.

2006/42/EC	Directive 2006/42/EC of the European Parliament and of the Council of 17 May 2006 on machinery and amending Directive 95/16/EC (amended version) (1)
2014/35/EU	Directive 2014/35/EU of the European Parliament and of the Council of 26 February 2014 on the harmonisation of the laws of the Member States relating to the making available on the market of electrical equipment designed for use within certain voltage limits
2011/65/EU	Directive 2011/65/EU of the European Parliament and of the Council of 8 June 2011 on the restriction of the use of certain hazardous substances in electrical and electronic equipment

Source of applied harmonised standards according to Article 7 paragraph 2

EN ISO 12100:2010-11	Safety of machinery - General principles for design - Risk assessment and risk reduction (ISO 12100:2010)
EN 60204-1:2006/A1:2009	Safety of machinery – Electrical equipment of machines – Part 1: General requirements

Nieuwkuijk 2020-12-22 A.H.M. Boom + J.Boers








Place Date Managing director + Manager R&D

19 Appendices




19.1 List of pictograms used




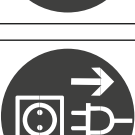
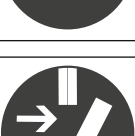
In the following subchapters the symbols and pictograms used in this document along with their meanings are given.

19.1.1 Warning symbols


	<ul style="list-style-type: none"> Hazard warning
	<ul style="list-style-type: none"> Fall hazard warning
	<ul style="list-style-type: none"> Tip hazard warning
	<ul style="list-style-type: none"> High voltage warning
	<ul style="list-style-type: none"> Harmful or irritating substances warning
	<ul style="list-style-type: none"> Trip hazard warning
	<ul style="list-style-type: none"> Slip hazard warning

19.1.2 Mandatory symbols

	<ul style="list-style-type: none"> General mandatory symbol
	<ul style="list-style-type: none"> Observe operating instructions
	<ul style="list-style-type: none"> Work in pairs or with a second person present

	<ul style="list-style-type: none"> • Wear respiratory protection
	<ul style="list-style-type: none"> • Wear protective gloves
	<ul style="list-style-type: none"> • Wear safety boots
	<ul style="list-style-type: none"> • Pull out the mains plug
	<ul style="list-style-type: none"> • De-energise prior to carrying out work

19.1.3 Prohibition symbols

	<ul style="list-style-type: none"> • Standing in the vicinity or under suspended loads prohibited
---	--

19.1.4 Transport and storage pictograms

	<ul style="list-style-type: none"> • Protect from moisture
---	---

