



Translation of the original operating instructions

COMPACT 75

701L60=SB75

EN - Additional language versions are available for download under: www.pe.ottobock.com/downloadcenter

DE - Weitere Sprachversionen können Sie herunterladen unter: www.pe.ottobock.com/downloadcenter

FR - Vous pouvez télécharger d'autres versions linguistiques sur: www.pe.ottobock.com/downloadcenter

NL - Overige taalversies kunt u downloaden via: www.pe.ottobock.com/downloadcenter

ES - Puede descargar la versión en otros idiomas en: www.pe.ottobock.com/downloadcenter

IT - Ulteriori lingue possono essere scaricate all'indirizzo: www.pe.ottobock.com/downloadcenter

SV - Andra språkversioner går att ladda ner från: www.pe.ottobock.com/downloadcenter

RU - Версии на других языках можно скачать по ссылке: www.pe.ottobock.com/downloadcenter

CONTENTS

1.1	Description of caution symbols and labels	4
1.2	Purpose and destination	4
2	Technical data	6
3	Installation	7
4	EG – Declaration of conformity	8
5	Name of parts	9
6	Set up for operation	9
7	Using the Flexam COMPACT 75	10
7.1	Control panel	10
7.2	Changing tools with the bayonet	11
7.3	Changing the scouring belts	11
7.4	Tracking the scouring belt	12
7.5	Tension on the scouring belt	13
8	Cleaning and maintenance	13
8.1	cleaning the scouring belt and rollers	13
8.2	Cleaning the dust filter and the dust container	14
9	The naumkeag motor	15
9.1	optional: rotation direction	15
9.2	Other tools for the naumkeag motor	16
9.3	Replacing the naumkeag scouring paper	16
10	Dust extraction	17
11	Troubleshooting	18
12	Periodic maintenance	19
appendix 1	rollers	20
appendix 2	Scouring belts	21
appendix 3	Scouring paper for the naumkeag	22
Notes		23

Preface

Many thanks for choosing the Flexam COMPACT 75. We are confident that you can soon carry out your tasks in a safe, comfortable, healthy and ergonomically friendly environment. Should you have additional remarks or ideas to continue improving our products, we like to hear about them and kindly ask you to get in touch with us. We appreciate that the continuous contribution of it's users helps Flexam machines to develop into reliable and esteemed products they are today.

We thank you in advance for your contribution and hope that you will share your positive experience with colleagues and friends.

Usage

The Flexam COMPACT 75 is used in the entire shoe industry. This machine is designed and produced by Ottobock Equipment.

Maintenance

The Flexam COMPACT is produced with very high attention to details. At all times, they comply with the norms set for machine manufacturing. Especially in the area of safety and reliability, a lot of features have been added. Only the Ottobock Equipment Service team and Producers/Customer service departments that have been approved by Ottobock Equipment should carry out the maintenance. The guarantee expires immediately if the service has been carried out by unauthorized parties.

Warranty

The company gives a warranty of 12 month on the Flexam COMPACT 75, given that the machine is only used by professionally trained staff. Furthermore is it forbidden to use the Flexam COMPACT 75 purpose-alienated. The warranty covers all accessories, where the faults are not due to normal usage.

The claim has to be made in writing to the producer straight after the fault has been discovered and the faulty part(s) enclosed therein. Providing the producer approves the claim, he will send the replacement parts as soon as possible and free of charge.

Advantage

The Flexam COMPACT 75 has a powerful internal extraction system, automatic (simultaneously when switching on the concerned motor) or full automatic (sensor detection). The extraction system has a unique space saving design. It also has optimal air flow and low noise.

Finally, we like to wish you successful working with this advanced machine

1.1 Description of caution symbols and labels

The following symbols are used throughout this manual and are described below:



Warning. If you do not follow the procedures prescribed in this manual it might result in irrevocable damage and/or severe injury.



Hazardous voltage. If you do not follow the procedures prescribed in this manual it might result in irrevocable damage and/or severe injury or death.

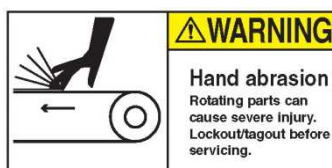


Hand abrasion. Rotating parts can cause severe injury. If you do not follow the procedures prescribed in this manual it might result in severe injury.



Rotating cutter head. Rotating parts can cause severe injury. If you do not follow the procedures prescribed in this manual it might result in severe injury.

The following labels are used on the Flexam COMPACT 75 and are described below:



1.2 Purpose and safety

This section gives instructions for safe and proper handling of the flexam COMPACT 75.

There are no user-serviceable parts inside the flexam COMPACT 75.

All service, maintenance and installation information in this manual is for use by trained personnel only.

Do not remove any parts unless you are specifically told to do so in this manual.

Place the machine on a solid and flat surface, this ensures the smooth running of the machine. The distance between the machine and the wall needs to be a few centimetres, this space is needed for maintenance and operation.

The emergency stop feature is positioned in such a way that it is reachable in any dangerous situation.

The Flexam COMPACT 75 and the filtering devices are not suitable for working with damp or wet materials.

The Flexam COMPACT 75 is an exclusively indoor machine and should stand in a dry environment only. It is not to be used outside.

Further processing of dust and residue (collected by the filters) must be done in a way that complies with the current health and safety legislation.

Materials you can scour with the flexam COMPACT 75 are plastics, leather, cork and rubber. Never scour metal or materials containing metal.



During maintenance, changing the scouring belt or tools, always switch off the Flexam COMPACT 75. Always activate the emergency stop to be sure the machine is inactive.



Please consider the following while using this machine:

- **Always** wear personal safety equipment, such as safety goggles and gloves.
- **Always** leave enough distance to the rotating parts of the machine while operating.
- **Avoid** the danger of being wedged, due to loose clothes or hair etc.
- **Always** work at the right personal heights.
- **Always** guarantee a good illumination without shadows.

Naumkeag

Switch off the naumkeag motor after usage. The naumkeag motor runs silently and could not be noticed.

2 Technical details

Name: Flexam COMPACT
 Typ: 75
 Serial nr.: See nameplate
 Year of manufacturing: See nameplate

Weight: 219 kg
 dimensions : 75 x 75 x 160 cm (lxwxh)

Installation data: operating temperature $5^{\circ}\text{C} < t/m < 40^{\circ}\text{C}$
 Surface should be solid and flat. The surface should have the capacity to meet mentioned weights.

Motordata:
 Power (total): 2.1 kW

	Naumkeag motor scouring belts	motor for extraction	motor for
Power	0,25kW	0,75kW	1,1kW
Rotation	2860 rev/min rev/min	1415 rev/min	2860
Power supply voltage			
For Europe:	400V 50Hz	400V 50Hz	400V 50Hz
For USA :	208V 60Hz	208V 60Hz	208V 60Hz
Current			
For Europe:	0,71A	2,0A	2,5A
For USA :	1,5A	3,6A	4,6A

Noise level: 64 Db (A) Measuring distance 1 mtr, measuring height: 1.6 mtr

Surface treatment: The machine has been treated with a base coat and lacquer coat ral 7035

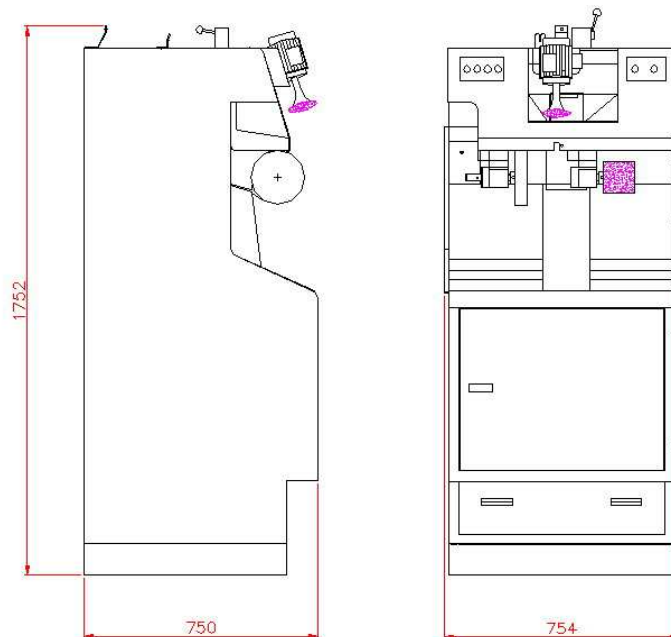
3 Installation

Place the machine on a solid and flat surface, this ensures the smooth running of the machine. The distance between the machine and the wall needs to be a few centimetres, this space is needed for maintenance and operation. The machine is fully operational upon delivery.



Prior to using the machine, connect it to the appropriate power connection. See the technical instructions on the machine for the appropriate connection and power consumption. Be sure to activate the emergency stop, the machine will be inactive. Service and installation may only be done by trained personnel.

Space needed is 75 x 75 x 175 cm



EG – DECLARATION OF CONFORMITY

The manufacturer: Otto Bock Equipment B.V.
Industriepark “het Hoog”
Mandenmaker 14
5253RC Nieuwkuijk
Netherlands

herewith declares with exclusive responsibility, that the machine type Flexam Compact 75 produced by him comply with the following guideline:

2006/42/EC	General machinery directive
2014/35/EU	Low voltage directive
2011/65/EU	Restrictions on the use of certain hazardous substances in electrical and electronic equipment

and are in compliance with the following norms:

EN-ISO 12100:2010	Safety of machinery – Terminology, general principles for design.
EN-ISO 349:1993+A1:2008	Safety of machinery – Minimum gaps to avoid crushing of parts of the human body.
EN-ISO 13850:2015	Safety of machinery – Emergency stop devices, functional aspects, design principles.
EN 60204-1:2006+A1:2009	Safety of machinery – Electrical equipment of machines. General requirements.

Nieuwkuijk,
08 December 2017



A.H.M. Boom,
Managing Director of Otto Bock Equipment B.V.

5 name of parts

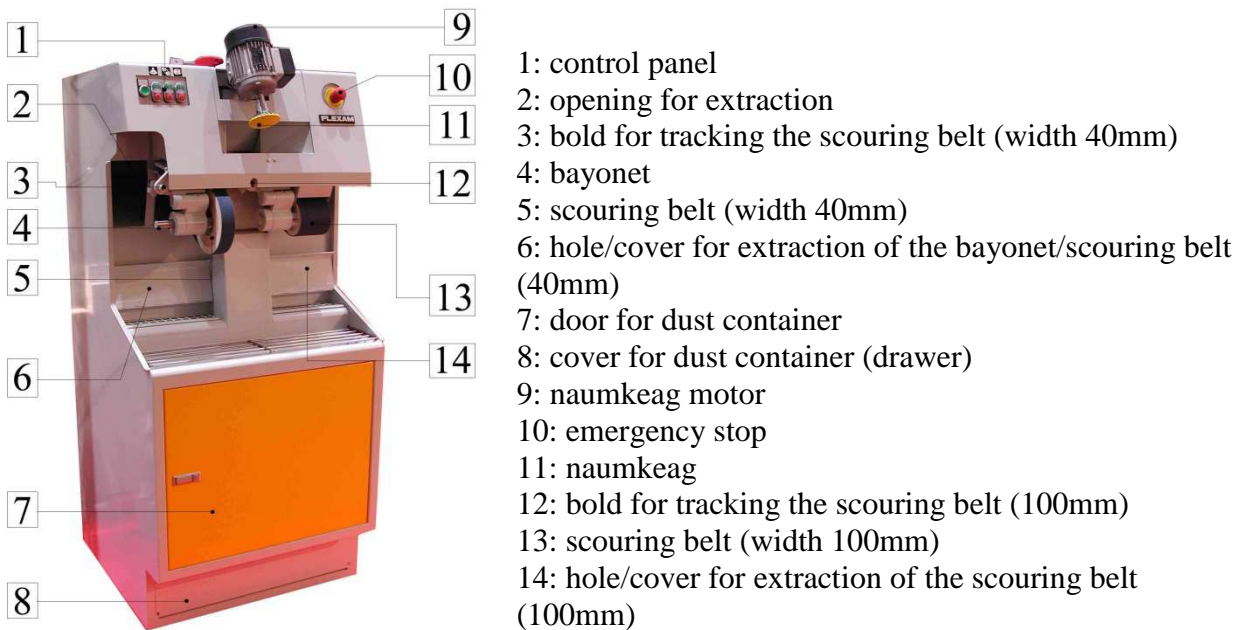


figure 1

6 Set up for operation



Read this manual thoroughly before proceeding with installation, connection (cable), operation, maintenance and inspection. Ensure you have sound knowledge of the flexam COMPACT 75 and familiarize yourself with all safety information and precaution before using the flexam COMPACT 75.



Be sure to activate the emergency stop. This prevents the machine from operating during installation. First connect the Flexam COMPACT 75 to the appropriate power connection. See the technical instructions on the machine. Service and installation may only be done by trained personnel.

If the Flexam COMPACT 75 is a model with pneumatic tension of the scouring belt, connect it to the air pressure. Pressure for the scouring belt may vary between 3 and 5 bar.

7 Using the Flexam COMPACT 75

7.1 Control panel

The function of the buttons on the control panel of the Flexam COMPACT 75 (figure 2) will be described in this section:

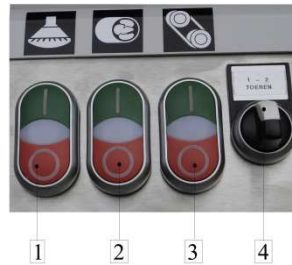


figure 2

Pos 1: Button for the naumkeag motor

Press the green button (symbol I) to start the naumkeag motor. Press the red button (symbol 0) to stop the naumkeag motor.

Pos 2: Button for the dust extraction. Press the green button (symbol I) to start the dust extraction. Press the red button (symbol 0) to stop the dust extraction.

Pos 3: Button for the scouring belts. Press the green button (symbol I) to start rotation of the bayonet/scouring belts. Press the red button (symbol 0) to stop the rotation.

Pos 4: Option. Switch for high/low speed of the motor for scouring belts. Turning the switch to the left gives a low speed. Turning the switch to the right gives a high speed. The middle position will stop the motor.

Note: The basic model of the Flexam COMPACT 75 comes without this switch.

7.2 Changing tools with the bayonet



Left of the scouring belt (width 40mm) is a conical shaft. See figure 3. This is for connecting tools with a bayonet. For further information about these tools please contact our sales department. You can also visit our website: www.pe.ottobock.com

figure 3



WARNING! Always deactivate the machine (press emergency stop) before changing tools.

7.3 Changing scouring belts



WARNING! Always deactivate the machine (press emergency stop) before changing tools.

Be sure the belts don't turn. Open the cover of the Flexam COMPACT 75 as shown in figure 4. Remove the nut if necessarily.



figure 4

Tension of the scouring belts is done by springs. So before exchanging a scouring belt, you have to remove the force of the spring. You do this as follows:



Be sure the belts don't turn. Use the unlocking bar. The unlocking bar is placed as seen on figure 5. Use this bar in the locking mechanism and move it downwards until you can't move it further. If the scouring belt is tensionless you can remove the belt.

The new scouring belt can be place. Be sure the direction of the rotation is correct. The direction is marked inside the scouring belt. Pull the bar down to put the tension back on the scouring belt.

figure 5

7.4 Tracking the scouring belt

If the scouring belt is not right in the middle of the rollers, the rollers will wear out faster than usual. Also one side could wear out more than the other side. Working will become difficult.

It is important to be sure the scouring belts are in the middle of the rollers. Do this each time you start working with the Flexam COMPACT 75.

It is easy to track the scouring belt. Use the socket wrench with T-grip that comes with the machine. Place the socket wrench in the bold for tracking. Figure 6 shows these bolts, they are marked with an arrow. See also figures 1, pos 3 and 12.

By turning the socket wrench you can adjust the tracking to the left or right.

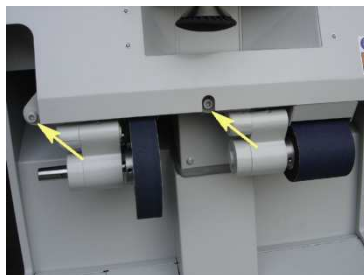


figure 6

7.5 Tension on the scouring belt

You can't change the belt tension. The tension is done by springs and guarantee a sufficient tension. If the tension is not sufficient enough, check if the handle for the tension is fully pushed back. See section 7.3 . If this doesn't help, please contact the Ottobock Equipment service department.

8 Cleaning and maintenance

8.1 Cleaning the scouring belt and rollers

On the inside of the scouring belt there is a copper brush (figure 7), it cleans the inside of the scouring belt. This prevents the rollers from fast contamination, so the scouring belt will not vibrate.



figure 7

If the scouring belt happens to vibrate, you can clean the rubber rollers by wipe away residue that is on the rollers. You can easy do this by hand. **Never use chemicals for cleaning!** If the scouring belt keeps vibrating you might consider replacing the rollers.



WARNING! Always deactivate the machine (press emergency stop) before changing the brush.

8.2 Cleaning the dust filter and the dust container



WARNING!! Be sure the extraction unit is switched off so no dust will flow into the filter when cleaning.



The flexam COMPACT 75 is equipped with a cotton filter. This filter needs to be cleaned every day. Cleaning is done by hand using the device you find on top of the flexam COMPACT 75. See figure 8.

figure 8

Take the handgrip and move the attached cord forwards and backwards. By doing so, dust will fall of the filter into the dust container.



By opening the door in the front, you can access the dust container. (figure 9)
Pull it forwards to remove and cleaning.

figure 9



forget to lock it again.

figure 10



Below the Flexam COMPACT 75 is a dust container (drawer). Unlock this drawer by turning the handle as illustrated in figure 10. Pull the drawer and clean it. (figure 11)
When returning the drawer, don't

figure 11



Please note! Clean regular. This will give the filter a longer lifetime.

9 The naumkeag motor



figure 12



figure 13

The naumkeag motor is adjustable in all directions. By turning the handle (figure 12, marked by an arrow) you loosen the naumkeag motor. Place the naumkeag motor in the desired position. Lock this position when the naumkeag motor is in its right place by turning the handle. (figure 13, marked by an arrow)

9.1 Optional: rotation direction

The naumkeag can be equipped with a switch that changes the rotation direction. (figure 14). This switch is only done by customer demand.



Switch off the motor when changing rotation direction!



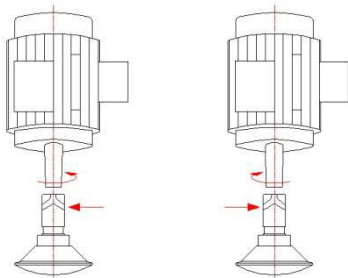
figure 14

9.2 Other tools for the naumkeag motor

The Flexam Compact has a naumkeag $\varnothing 90\text{mm}$.

You can also place other tools on the naumkeag motor. Read the given brochure for possibilities or visit our website, www.pe.ottobock.com

You can also contact the Ottobock Equipment service team.



The naumkeag has a universal bayonet. It is suitable for a left turning or right turning motor. Please notice the side of the bayonet. Figure 15 shows the direction of rotation and on which side the bayonet should be.

figure 15

9.3 Replacing the naumkeag scouring paper

You can replace the scouring paper as follows:



Figure 16



figure 17

Place a fork spanner (width 22) as shown on figure 16. Place a pen $\varnothing 6$ in the hole of the naumkeag as shown on figure 16. Because it is fastened with left-handed thread, the direction for loosening is just the other way you are used to. Hold the pen $\varnothing 6$ and turn the fork spanner in the direction as shown on figure 16. Figure 17 shows how it looks when the naumkeag is removed.



Warning. Switch off the machine when replacing the scouring paper! Press the emergency button.



Figure 18



figure 19

Remove the cone that holds the scouring paper in its place. Figure 18 shows the naumkeag with the cone, figure 19 shows the naumkeag without the cone. Now you can replace the scouring paper.

Fasten the cone. If the rubber under the scouring paper is worn-out, you can order one at Ottobock Equipment and replace it yourself.

10 Dust extraction

To remove all the dust when working with the Flexam COMPACT 75, the machine has extraction holes. You can open the holes by hand by lifting its cover. See figures 20,21,22 and 23.



figure 20



figure 21



figure 22



figure 23

Figure 20 : all covers closed.

Figure 21: cover for bayonet opened.

Figure 22: cover for scouring belt (width 40mm) opened.

Figure 23: cover for scouring belt (width 100mm) opened.

To have the most efficient extraction, only one hole should be opened at a time.

The extraction hole for the naumkeag motor is opened by pulling the handle behind the naumkeag motor. See figures 24 and 25.



figure 24



figure 25

11 Trouble shooting

	Problem	Cause	Solution
scouring belts	-scouring belt vibrates.	-handle not pushed back	push back the handle. See section 7.3
	-unable to put tension on the belt	-broken device for tensioning	Contact the Jos America service team
	-the scouring belt makes a lot of noise	-bearings worn-out	Contact the Jos America service team
		-roller not secured	secure the roller
		-roller is not round or contaminated	replace or clean the rollers
	-poor tracking of the scouring belt	-the scouring belt is not proper set	track the scouring belt. See section 7.4
Naumkeag	-the naumkeag vibrates	-naumkeag is worn-out	replace the naumkeag
Bayonet	-the bayonet vibrates	-worn-out tool attached	replace the tool

For advice and further information please don't hesitate to contact us under:
Ottobock Equipment.

12 Periodic maintenance

To assure smooth running of the machine you must keep a periodic maintenance. Be sure to check the list below.

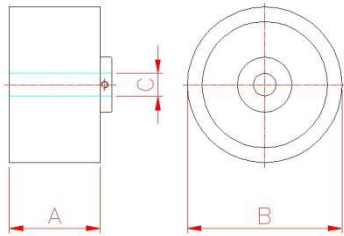


During maintenance always switch off the Flexam COMPACT 75. Always activate the emergency stop to be sure the machine is inactive.

Maintenance	Every day	Every week	Every month	Every 6 month
Cleaning the dust filter	#		#	
Cleaning motor space	#			
Cleaning rollers		#		
Adjusting the copper brush			#	
Check if emergency button works properly		#		
Check air pressure (optional)			#	

appendix 1 rollers

These rollers are available at Ottobock Equipment.



Rollers

<u>Measure A</u>	<u>measure B</u>	<u>measure C</u>	<u>article number</u>
40	170	20	702L140
100	100	25	702L143

Rollers for motor

<u>Measure A</u>	<u>measure B</u>	<u>measure C</u>	<u>article number</u>
100	100	18	702L153

appendix 2 Scouring belts

These scouring belts are available at Ottobock Equipment.

Standard

Roll	Width	Length	Grain	Article number
Ø100x100	100	1480	k24	649G124=24
Ø100x100	100	1480	k36	649G124=36
Ø100x100	100	1480	k60	649G124=60
Ø100x100	100	1480	k80	649G124=80
Ø100x100	100	1480	k120	649G124=120
Ø170x40	40	1650	k24	649G121=24
Ø170x40	40	1650	k36	649G121=36
Ø170x40	40	1650	k60	649G121=60
Ø170x40	40	1650	k80	649G121=80
Ø170x40	40	1650	k120	649G121=120



Optional

Roll	Width	Length	Grain	Article number
Ø170x100	100	1650	k24	649G125=24
Ø170x100	100	1650	k36	649G125=36
Ø170x100	100	1650	k60	649G125=60
Ø170x100	100	1650	k80	649G125=80
Ø170x100	100	1650	k120	649G125=120

appendix 3 Scouring paper for the naumkeag

These scouring papers are available at Ottobock Equipment.

scouring paper Ø 130mm. k80	article number 649G153=80
scouring paper Ø 130mm. k100	article number 649G153=100
scouring paper Ø 130mm. k120	article number 649G153=120
scouring paper Ø 130mm. k180	article number 649G153=180

scouring paper Ø 90mm. k60	article number 649G154=60
scouring paper Ø 90mm. k80	article number 649G154=80
scouring paper Ø 90mm. k100	article number 649G154=100
scouring paper Ø 90mm. k120	article number 649G154=120
scouring paper Ø 90mm. k180	article number 649G154=180

Notes

A series of horizontal dashed lines for writing notes.

Producer and supplier
Otto Bock Equipment B.V.
Industriepark "het Hoog"
Mandenmaker 14
5253RC Nieuwkuijk
Netherlands
www.pe.ottobock.com